



Cassette awning

markilux MX-3

The sturdy cassette awning with a slender figure and contrasting visual features from round to square.



[markilux.com](https://www.markilux.com)

markilux
safe timeless beautiful

Product Characteristics

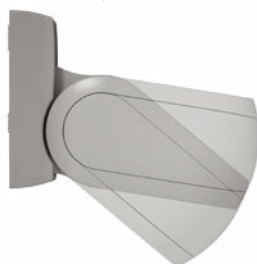
Wind resistance class 2
Beaufort 5 → 7.5–10.4 m/s → 28–37 km/h → 17–23 mph



1 face fixture



1 face fixture, maximum pitch of 35°



1 top fixture



1 top fixture, view from the rear



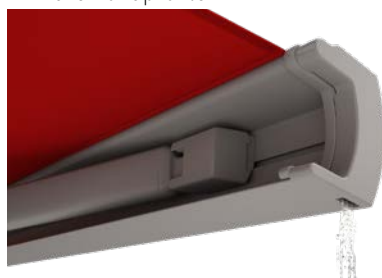
2 LED-Line in the cassette ¹⁾



2 LED-Spots underneath the cassette ¹⁾



3 unique water drainage system in the front profile



4 wall sealing profile ¹⁾



5 bionic tendon made of high-tech fibres for optimum power transference



1) Optional accessories

Product Characteristics

Description

- a slender, folding-arm full cassette awning exhibiting excellent technological features, which enables areas up to 6 m wide to be shaded

Special features

- self-supporting cassette profile with the brackets installed at each end of the awning – therefore suitable for bridging larger distances
- cassette with arms situated in front and at each end, which – when the awning is closed – are encompassed fully by the front profile lending a harmonious overall appearance to the awning
- the cassette obscures the view of the roller tube when the awning is extended
- option of directional LED Line fitted to the underside of the cassette which provide an appealing atmosphere in the evening
- various screen profile and awning colours can be combined
- screen profile also available with exclusive coating in the Selection MX colour selection
- the brackets are hidden unobtrusively behind the awning

Dimensions

- cassette in the standard version: depth 230 mm, height 120 mm
- single unit: minimum width 183 cm at the smallest projection of 150 cm, maximum width 500 cm at the largest projection of 350 cm or 600 cm at a maximum projection of 300 cm

Roller tube and lateral bearings

- round roller tube Ø 85 mm with keyway, galvanised steel – excellent stability, ensures near perfect cover performance even at the largest widths
- the arm bearer is made of die-cast aluminium, powder coated, with integrated, infinitely variable pitch setting mechanism

Awning profiles

- extruded aluminium, in façade quality, powder coated
- two-piece cassette with clever inner profile – providing the awning cover with optimum protection against the elements
- the lower cassette profile has a slot into which the LED Line can be recessed
- front profile, harmoniously rounded at the front with integrated gutter

Folding arms

- profiles in extruded aluminium, in façade quality, powder coated
- moving parts made of drop-forged aluminium – the arms are therefore extremely fracture resistant
- pivot bolts in stainless steel run in Teflon-coated bronze bushes – practically maintenance free, virtually silent and extremely hard wearing
- power transference via the innovative bionic tendon at the elbow joint, made of high tensile, high-tech fibres – low in friction, noiseless, insensitive to corrosion and UV resistant

End caps

- the end cap insert sections are made of high-quality plastic, powder coated or in a polished chrome finish
- the front profile end caps are made of high-quality plastic, powder coated, with water drainage holes

Fixture brackets

- face fixture, top fixture, eaves fixture
- extruded aluminium, powder coated
- also available in individual widths (on request)
- including caps made of high quality plastic to cover the face or top fixture brackets and their fixture bolts
- pitch range 5°–35° (face fixture), or 5°–70° (top or eaves fixture)
- spacer plates, stand-off brackets and other accessories are available

Frame, end cap insert and styling panel colours

markilux frame colours without surcharge

traffic white, RAL 9016



metallic aluminium, RAL 9006



grey brown, similar to RAL 8019



off-white textured finish, 5233 ¹⁾



stone grey metallic, 5215 ¹⁾



anthracite metallic, 5204 ¹⁾



havana brown textured finish, 5229 ¹⁾



Non-standard powder-coated finish

Bespoke frame colours incur a surcharge – matt, metallic, finely textured and pearl finishes as well as other colour ranges (DB, Tiger etc.) on request. All frame colours are available at a surcharge with enhanced corrosion protection.

Colours may differ slightly from those depicted in both hue and finish.

¹⁾ textured finish

Combination options

All standard styling panel colours can be combined at will with the standard frame colours ²⁾

Frame stone grey metallic, 5215

Styling panel / end cap insert anthracite metallic, 5204



Frame off-white textured finish, 5233

Styling panel / end cap insert anthracite metallic, 5204



Frame traffic white, RAL 9016

Styling panel / end cap insert metallic aluminium, RAL 9006



Frame anthracite metallic, 5204

Styling panel / end cap insert stone grey metallic, 5215



Colours may differ slightly from those depicted in both hue and finish.

²⁾ Illustrations by way of example; The styling panel and end cap insert colours must be the same colour.

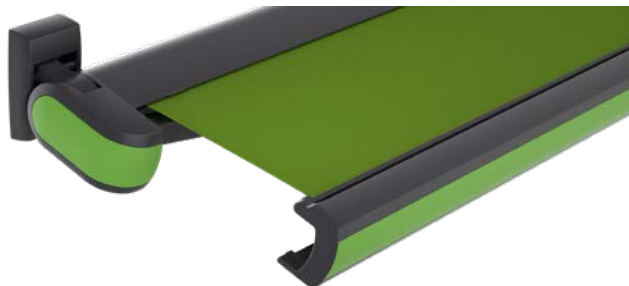
Additional styling panel and end cap insert colours

The additional styling panel colours can be combined at will with all the standard frame colours ¹⁾

Styling panel / end cap insert yellow green, RAL 6018

Frame anthracite metallic 5204

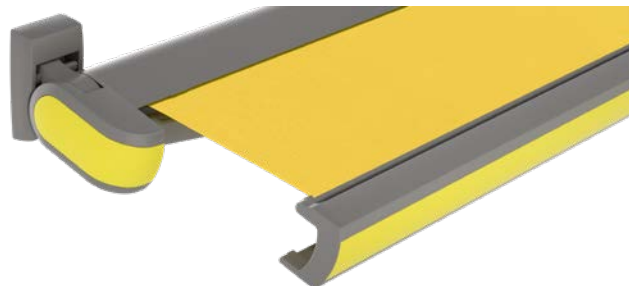
Awning cover 314 86



Styling panel / end cap insert sulphur yellow, RAL 1016

Frame stone grey metallic, 5215

Awning cover 309 01



Styling panel / end cap insert red orange, RAL 2001

Frame havana brown textured finish, 5229

Awning cover 309 12



Styling panel / end cap insert traffic red, RAL 3020

Frame anthracite metallic 5204

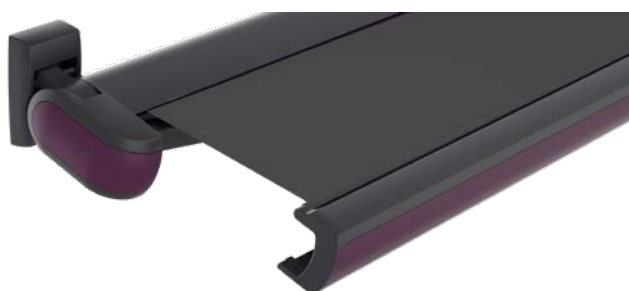
Awning cover 411 30



Styling panel / end cap insert purple violet, RAL 4007

Frame anthracite metallic, 5204

Awning cover 315 97



Styling panel / end cap insert pearl white, RAL 1013

Frame off-white textured finish, 5233

Awning cover 309 37



Styling panel / end cap insert pearl mouse grey, RAL 7048

Frame havana brown textured finish, 5229

Awning cover 314 87



Styling panel / end cap insert agate grey, RAL 7038

Frame stone grey metallic, 5215

Awning cover 315 92



Colours may differ slightly from those depicted in both hue and finish.

¹⁾ depictions by way of example; The fabric and styling panel in a matching colour; styling panel and end cap insert colours must be the same colour.

Additional Selection MX front panel colours

Recommended colour combinations ²⁾

SMX-01 Copper green with patina
Frame anthracite metallic, 5204
Awning cover 310 58



SMX-02 Brass with dark patina
Frame off-white textured finish, 5233
Awning cover 309 07



SMX-03 Bronze dark-patinated
Frame havana brown textured finish, 5229
Awning cover 313 87



SMX-04 Matt black / silver effect lacquer
Frame anthracite metallic, 5204
Awning cover 310 28



SMX-05 Matt white/silver special effect lacquer
Frame off-white textured finish, 5233
Awning cover 310 09



SMX-06 Silver grey special effect lacquer
Frame stone grey metallic, 5215
Awning cover 310 18



SMX-07 Amber orange metallic matt
Frame havana brown textured finish, 5229
Awning cover 314 83



SMX-08 Pebble beige metallic matt
Frame off-white textured finish, 5233
Awning cover 314 87



SMX-09 Ruby red metallic matt
Frame anthracite metallic 5204
Awning cover 421 30



SMX-10 Emerald green metallic matt
Frame Havana brown textured finish 5229
Awning cover 411 61



Notes with regard to selecting colours from the markilux Selection MX range

Every front panel finished in a coating from the Selection MX range is unique. In a complex procedure, an exclusive look is created by using several layers of lacquer. During this process, the resulting colour and colour texture are influenced by different factors.



For technical reasons, a slight two-tone effect, variations in the degree of gloss and colour hue as well as small variations in colour between subsequent coats of paint in the same tone may be in evidence. The colour texture is always unique, particularly in the case of multi-layered coatings. The compound colour tone SMX-10 Emerald green metallic is an interference colour, which has an iridescent effect depending on the light incidence and the viewing angle.

You are free to combine any Selection MX front panel colour with any frame colour. Colours may differ slightly from those depicted in both hue and finish.

2) Illustrations by way of example; The styling panel and end cap insert colours must be the same colour.

Dimensions and configuration options


Single unit


		Awning width							Minimum width		
		250	300	350	400	450	500	550	600	Motor	Crank handle
Order dimensions		183 250	251 300	301 350	351 400	401 450	451 500	501 550	551 600		
H	150	1) 250								191	183
	200	1) 250								233	233
	250	—	1) 300							283	283
	300	—	—	1) 350						333	333
	350	—	—	—	1) 400			—	—	383	383

dimensions in cm

1) = please note the minimum widths!

H = projection

 = 2 folding arms,
2 brackets

 = 2 standard arms

Operation

	standard	optional
crank handle	✓	—
spring-assisted crank handle	—	✓
hard-wired motor	—	✓
silentec motor (optionally with external radio receiver io / RTS)	—	—
radio-controlled motor io, 868 MHz	—	✓
radio-controlled motor RTS, 433 MHz	—	✓
868 MHz radio-controlled motor io with manual override	—	—

Coupled awnings

not available

Awning cover

	fabric pattern no.	standard	optional
sunvas	300.. - 315..	✓	—
sunsilk	324.. / 328.. / 369..	✓	—
sunbow ¹⁾	411.. - 427..	✓	—
smart art	340..	—	✓
perla FR	371.. / 372..	—	✓

1) up to max. 300 cm projection available

Shadeplus

not available

Optional accessories

LED-Line in the cassette
LED-Spots underneath the cassette
wall sealing profile, up to a pitch of 35°
infrared heater 2500 W
infrared heater 2500 W with integrated radio-controlled receiver 868 MHz radio-controlled io
automatic controls (light, wind, rain)

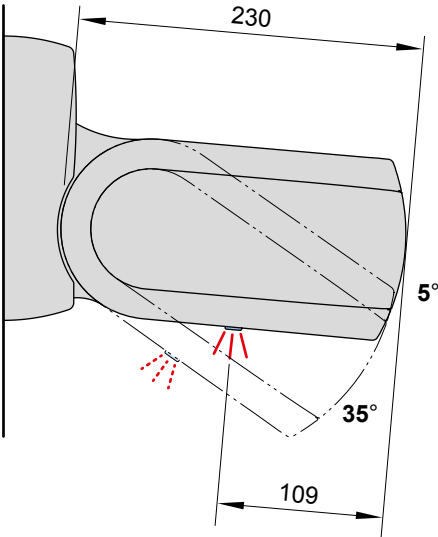
N.B. Important background information can be found in the chapter “Optional Accessories”.

Fixture options

face fixture bracket with cover, left 100 mm	75885.
face fixture bracket with cover, right 100 mm	75886.
face fixture bracket left, 300 mm	75877.
face fixture bracket right, 300 mm	75878.
spreader plate A 430 × 160 × 12 mm	73466.
spreader plate B 300 × 400 × 12 mm	73465.
markilux panel 250 × 230 × 49 mm	76308.
markilux panel continuous	701104
stand-off bracket 80–300 mm	72872.
for face fixture bracket 100 mm	
stand-off bracket for 300 mm face fixture brackets	77968.
top fixture bracket with cover, left 100 mm	75887.
top fixture bracket with cover, right 100 mm	75888.
eaves fixture bracket 150 mm plate	75889.
eaves fixture bracket 90 mm plate, 270 mm plate	71659.
flat plate and angled bracket for eaves fixture, machine finish aluminium, 500 mm	741290
spreader plate 260 × 60 × 12 mm for eaves fixture bracket	75383.

Lighting options

LED-Line in the cassette



Technical specification

operating voltage	230 V, 50 Hz
power output per metre	10 W / metre
number of LEDs per metre	120 LEDs / metre
light source	LED (12 V)
number of transformers	1 unit
light temperature	warm white
IP protection class	IP 44
service life	approx. 15.000 h

Controls

	standard	optional
radio-controlled dimmer io 868 MHz	✓	—
radio-controlled dimmer RTS 433 MHz	✓	—

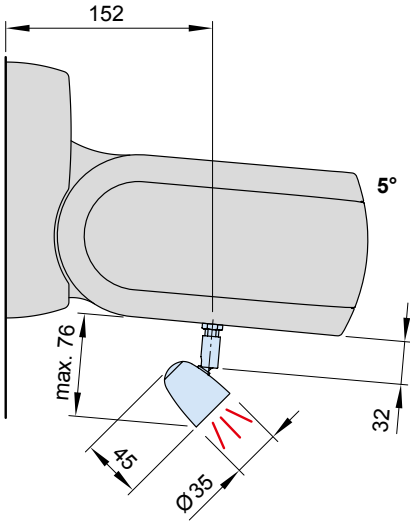
Electrical connection

power supply cable with open end H05RN-F 3G1 (3 × 1 mm²)
--

dimensions in mm

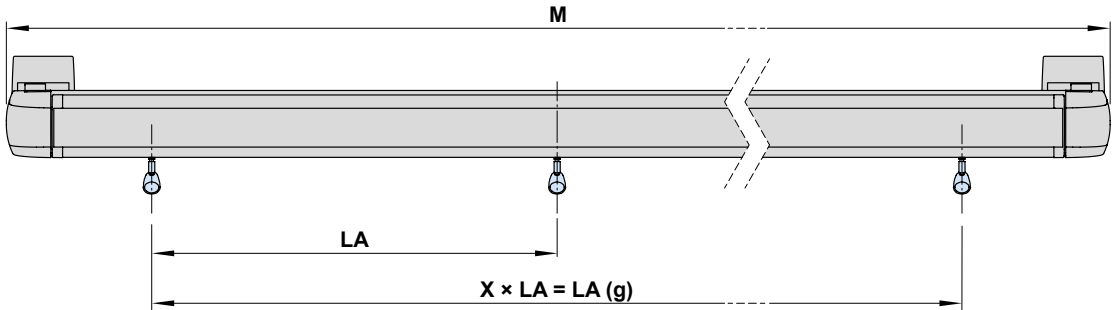
Lighting options

Directional LED spotlights underneath the cassette



dimensions in mm

Technical specification		Controls		standard	optional
operating voltage	230 V, 50 Hz	radio-controlled dimmer io 868 MHz		✓	—
Leistung eines LED-Spots	5 W	radio-controlled dimmer RTS 433 MHz		✓	—
light source	LED (12 V)				
number of transformers	1 unit				
light temperature	warm white				
IP protection class	IP 44				
service life	approx. 20.000 h				
		Electrical connection			
		power supply cable with open end H05RN-F 3G1 (3 × 1 mm ²)			



Awning width	No. of spotlights	LA	LA (g)
195–250	3	75	150
251–300	3	98	196
301–350	3	98	196
351–400	4	98	294
401–450	4	98	294
451–500	5	98	392
501–550	5	98	392
551–600	6	98	490

dimensions in cm

LA (g) = distance between the spotlights (total)
M = order dimension = awning width
X = number of distances between the spots (depends on size)

dimensions in cm

No. of brackets | No. of fixing points

Order dimensions		Overall awning width							
		250	300	350	400	450	500	550	600
		195	251	301	351	401	451	501	551
		250	300	350	400	450	500	550	600
BHT		No. of brackets No. of fixing points							
W	10	2 6							
BP		A 2 16 B 2 8							
PA		2 8							
DA / DE	10	2 8							

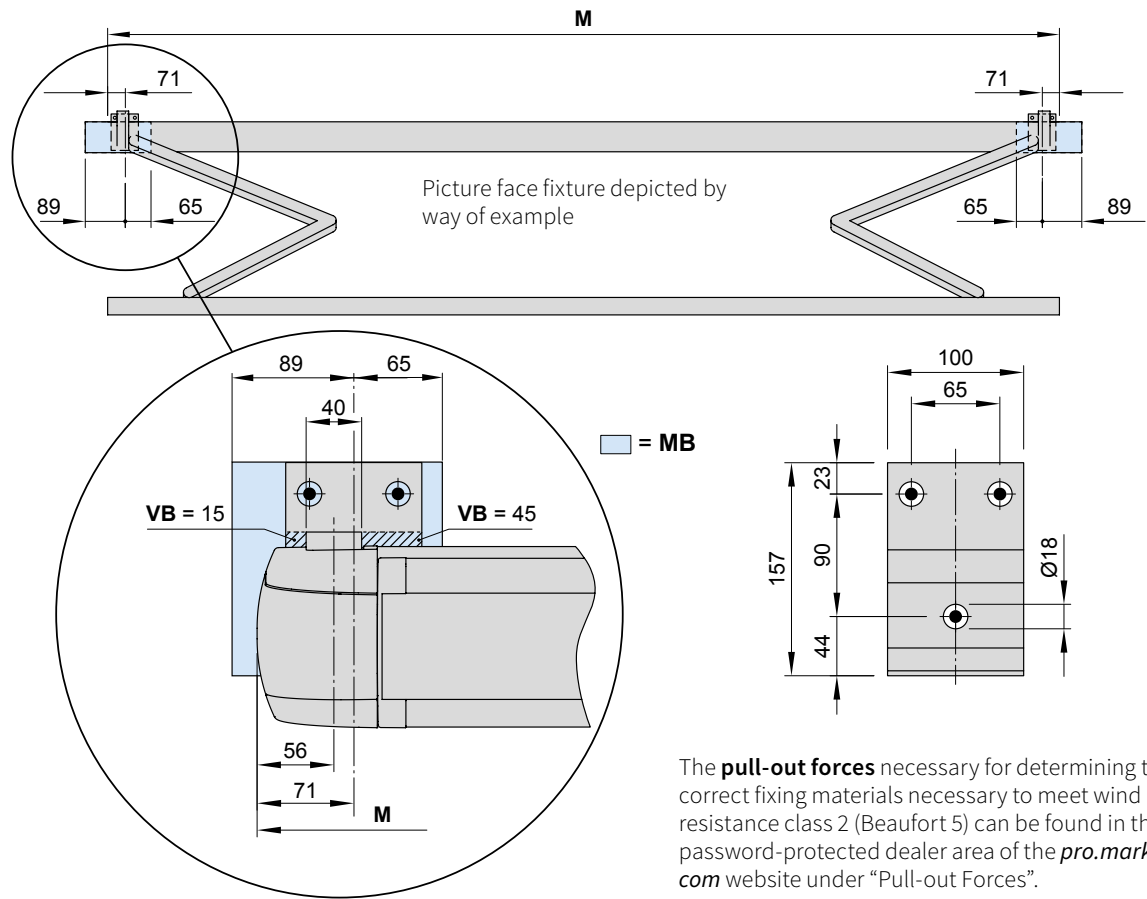
dimensions in cm

The **pull-out forces** necessary for determining the correct fixing materials necessary to meet wind resistance class 2 (Beaufort 5) can be found in the password-protected dealer area of the *pro.markilux.com* website under “Pull-out Forces”.

- BHT = bracket width
- BP = spreader plate (A or B)
- DA = eaves fixture brackets
- DE = top fixture brackets
- PA = markilux panel, fixture profile, width 250 mm
- W = face fixture brackets

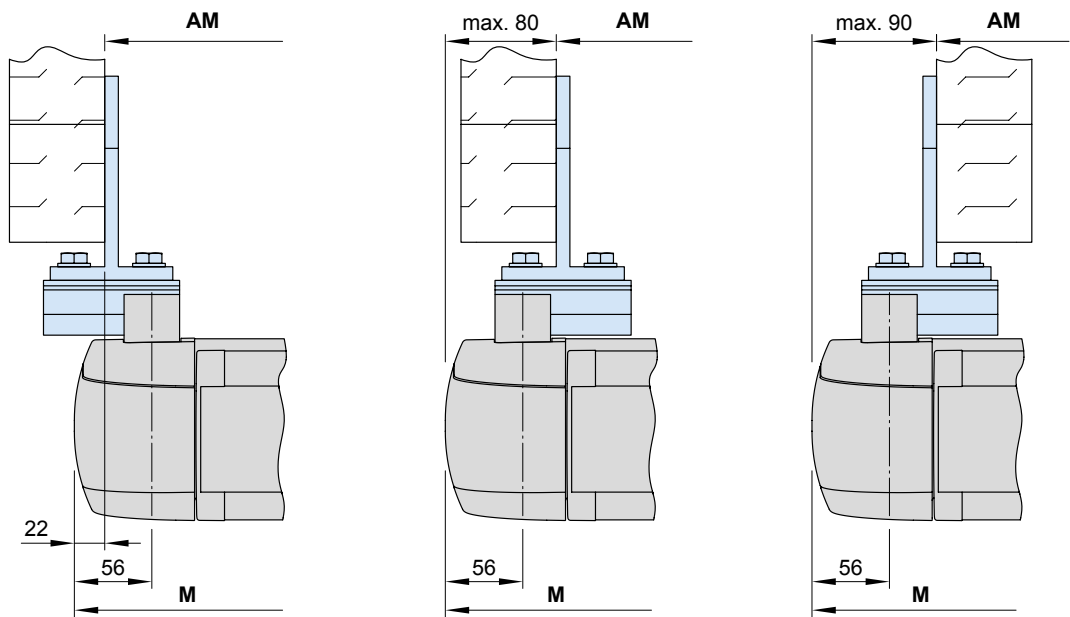
Bracket fixture range

Face and top fixture



The **pull-out forces** necessary for determining the correct fixing materials necessary to meet wind resistance class 2 (Beaufort 5) can be found in the password-protected dealer area of the *pro.markilux.com* website under "Pull-out Forces".

Eaves fixture

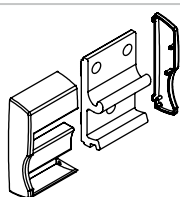


- AM** = installation dimensions
- M** = **order width** = awning width
- MB** = bracket fixture range
- VB** = adjustment range, face fixture bracket

dimensions in mm

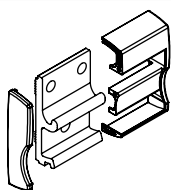
Face fixture

Fixtures, fittings and accessories



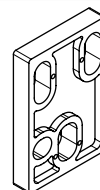
face fixture bracket
cover cap
left
100 mm

75885.



face fixture bracket
cover cap
right
100 mm

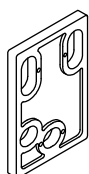
75886.



spacer plate
100 × 150 × 20 mm

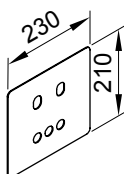
N.B.!
Stack to a max. height
of 200 mm

758831



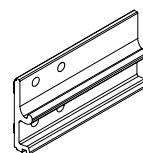
spacer plate
100 × 150 × 12 mm

758841



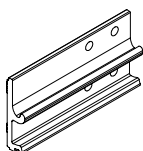
cover plate for spacer
plate and stand-off
brackets in the case of
external insulation
230 × 210 × 2 mm

71843.



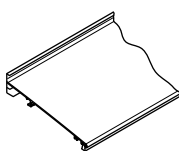
face fixture bracket left
300 mm

75877.



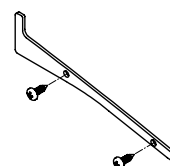
face fixture bracket right
300 mm

75878.



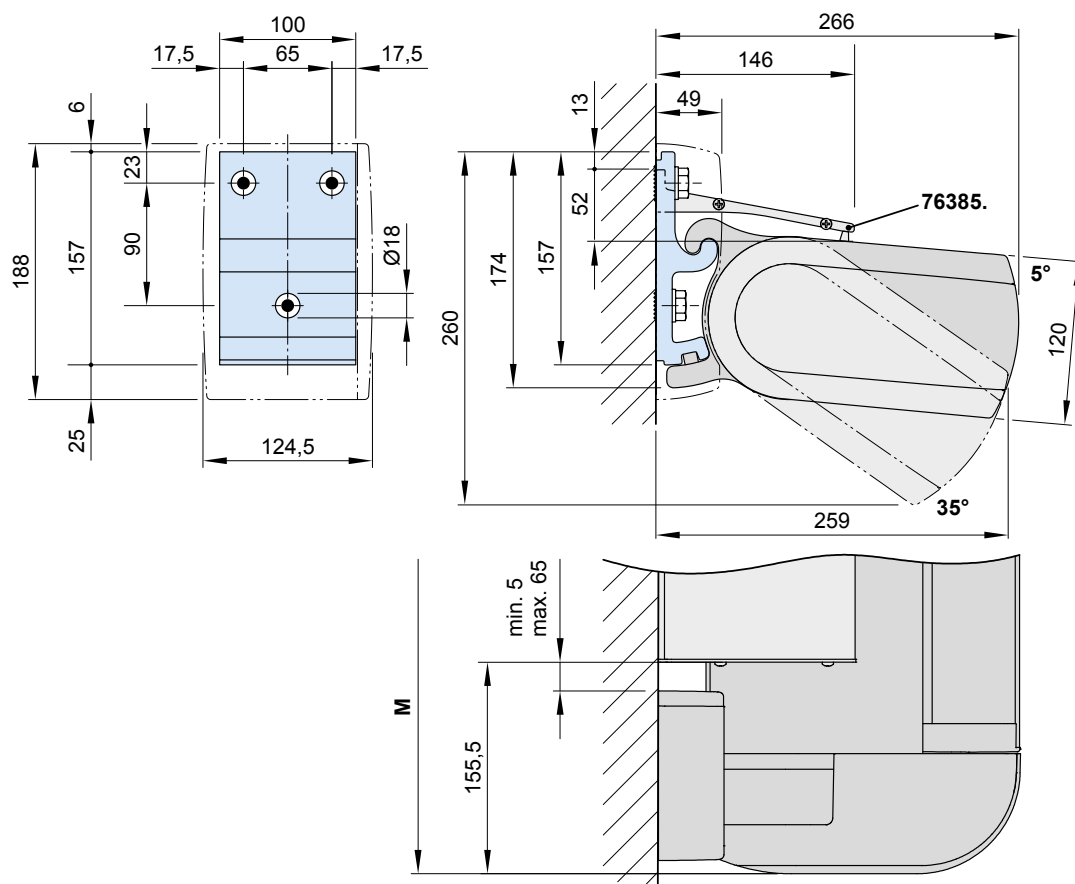
wall sealing profile
incl. brush seal
by the metre

76385. and 704241.



side plate
for wall sealing profile
including 2 pan-head
self-tapping screws

76386. and 2 × 735611



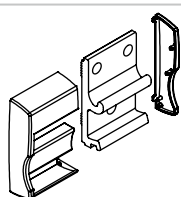
76385. = wall sealing profile (standard width = awning width (**M**) – 311 mm; up to a maximum awning pitch of 35°)

M = **order width** = awning width

dimensions in mm

Face fixture with spreader plate A

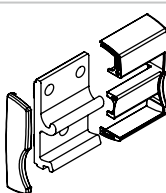
Fixtures, fittings and accessories



face fixture bracket
cover cap
left

100 mm

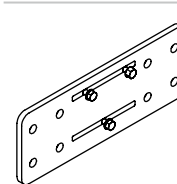
75885.



face fixture bracket
cover cap
right

100 mm

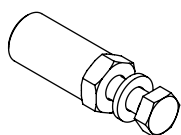
75886.



spreader plate A face
fixture
430 x 160 x 12 mm

430 x 160 x 12 mm

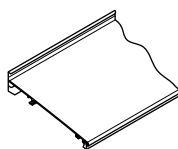
73466.



reduction bolt

pack 10 pcs

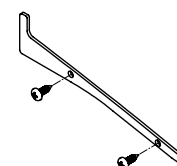
M 16 → M 12 | M 16 → M 10 | M 12 → M 10 | M 10 → M 10



wall sealing profile
incl. brush seal

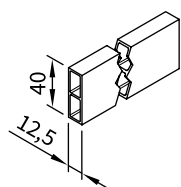
by the metre

76385, and 704241.



side plate
for wall sealing profile

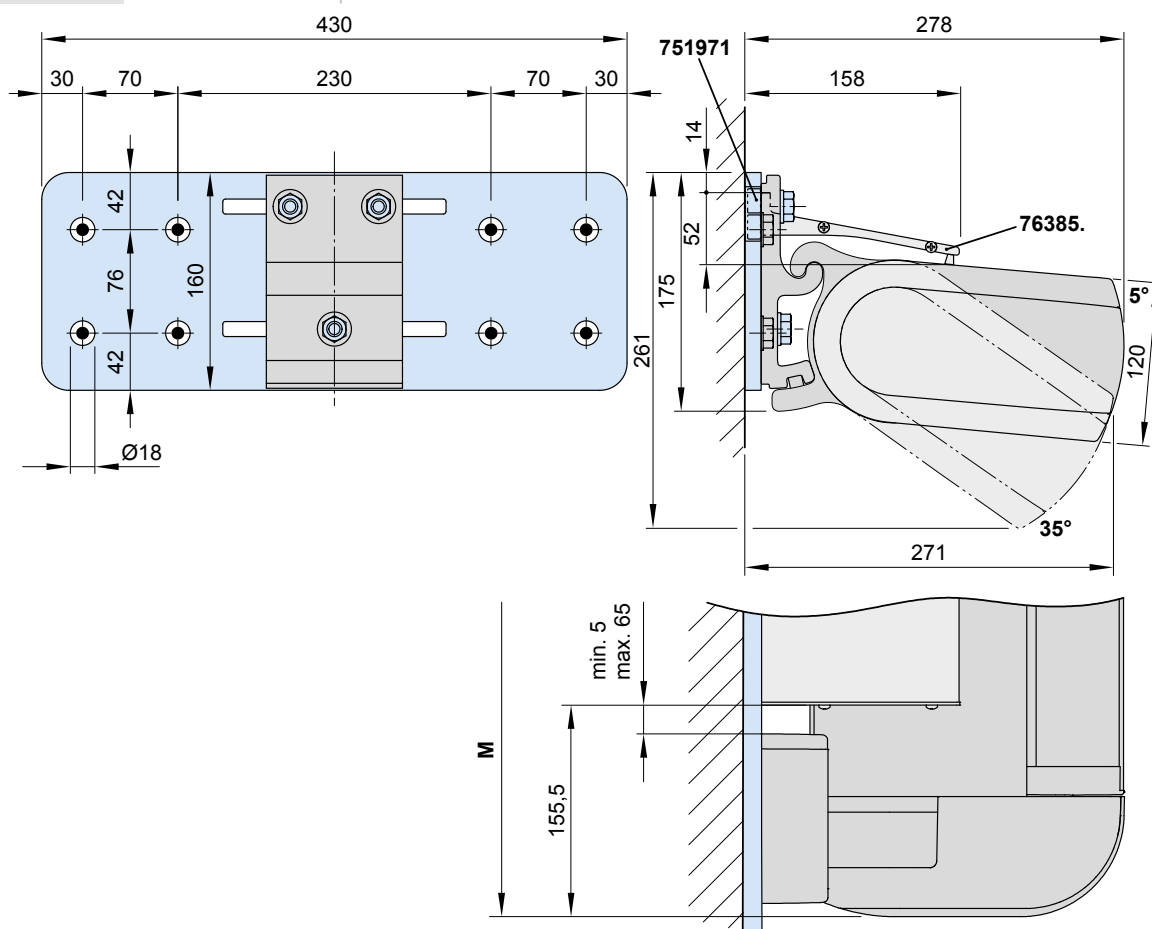
including 2 pan-head
self-tapping screws

76386, and 2×735611 

stand-off strip
for wall sealing

by the metre

751971



751971 = stand-off strip for wall sealing profile

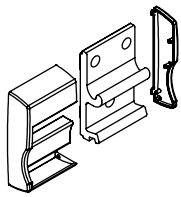
76385. = wall sealing profile (standard width = awning width (**M**) – 311 mm; up to a maximum awning pitch of 35°)

M = **order width** = awning width

dimensions in mm

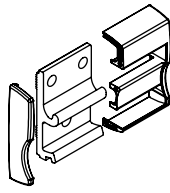
Face fixture with spreader plate B

Fixtures, fittings and accessories



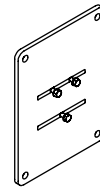
face fixture bracket
cover cap
left
100 mm

75885.



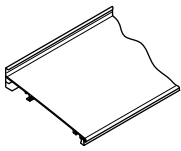
face fixture bracket
cover cap
right
100 mm

75886.



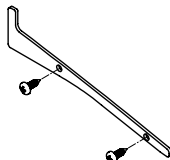
spreader plate B
300 × 400 × 12 mm

73465.



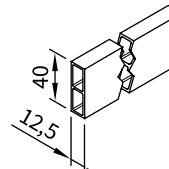
wall sealing profile
incl. brush seal
by the metre

76385. and 704241.



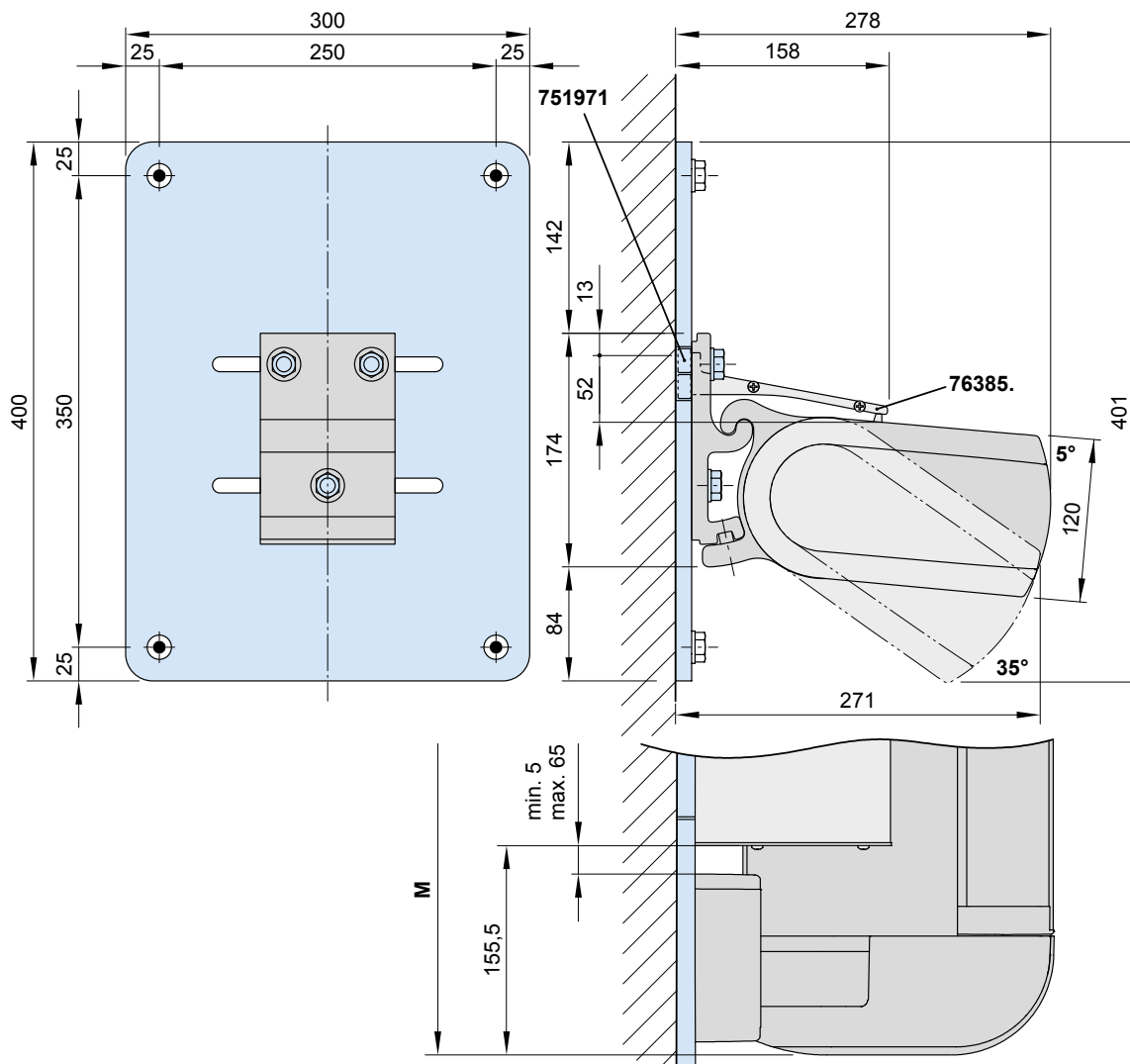
side plate
for wall sealing profile
including 2 pan-head
self-tapping screws

76386. and 2 × 735611



stand-off strip
for wall sealing
by the metre

751971



751971 = stand-off strip for wall sealing profile

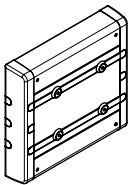
76385. = wall sealing profile (standard width = awning width (M) – 311 mm; up to a maximum awning pitch of 35°)

M = **order width** = awning width

dimensions in mm

Face fixture using the markilux panel 250 mm wide

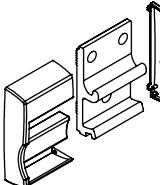
Fixtures, fittings and accessories



markilux panel
250 × 230 × 49 mm

with decorative profiles
and end caps

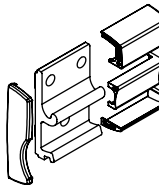
76308.



face fixture bracket
cover cap
left

100 mm

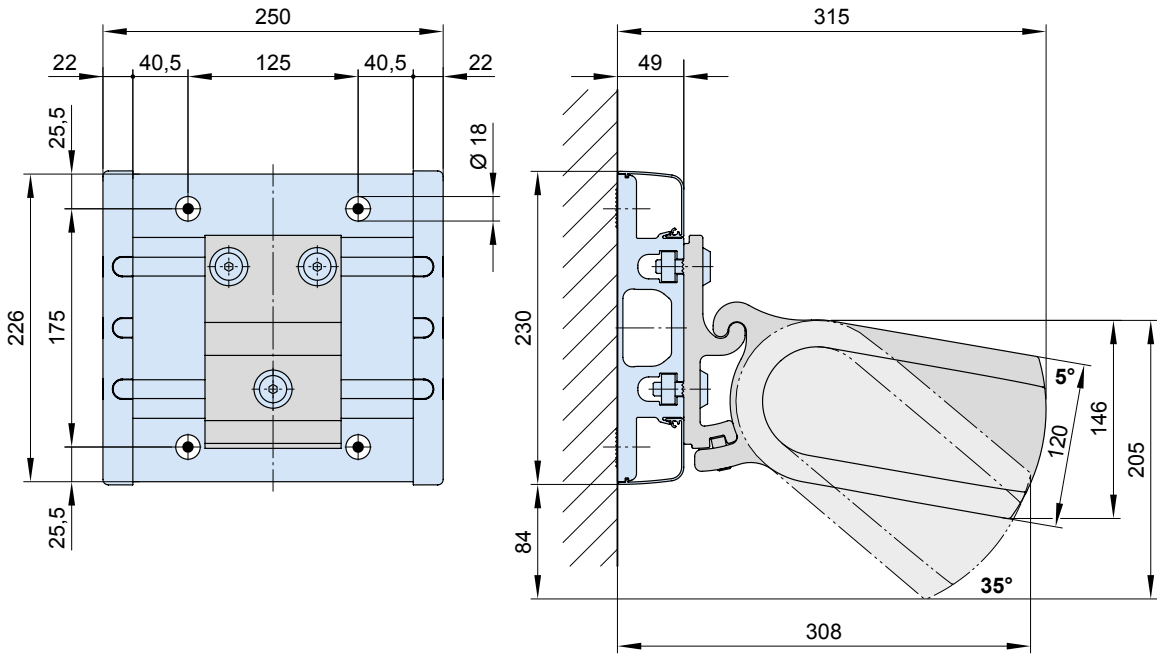
75885.



face fixture bracket
cover cap
right

100 mm

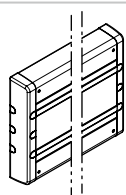
75886.



dimensions in mm

Face fixture with markilux panel continuous

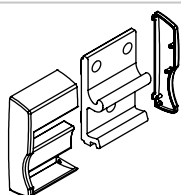
Fixtures, fittings and accessories



markilux panel
continuous

with decorative profiles
and end caps

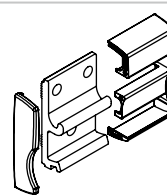
701104



face fixture bracket
cover cap
left

100 mm

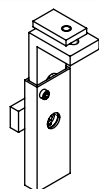
75885.



face fixture bracket
cover cap
right

100 mm

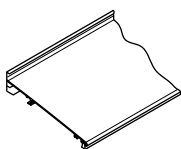
75886.



bracket
wall sealing profile

small

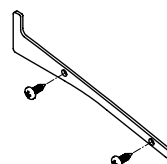
76468.



wall sealing profile
incl. brush seal

by the metre

76385. and 704241.



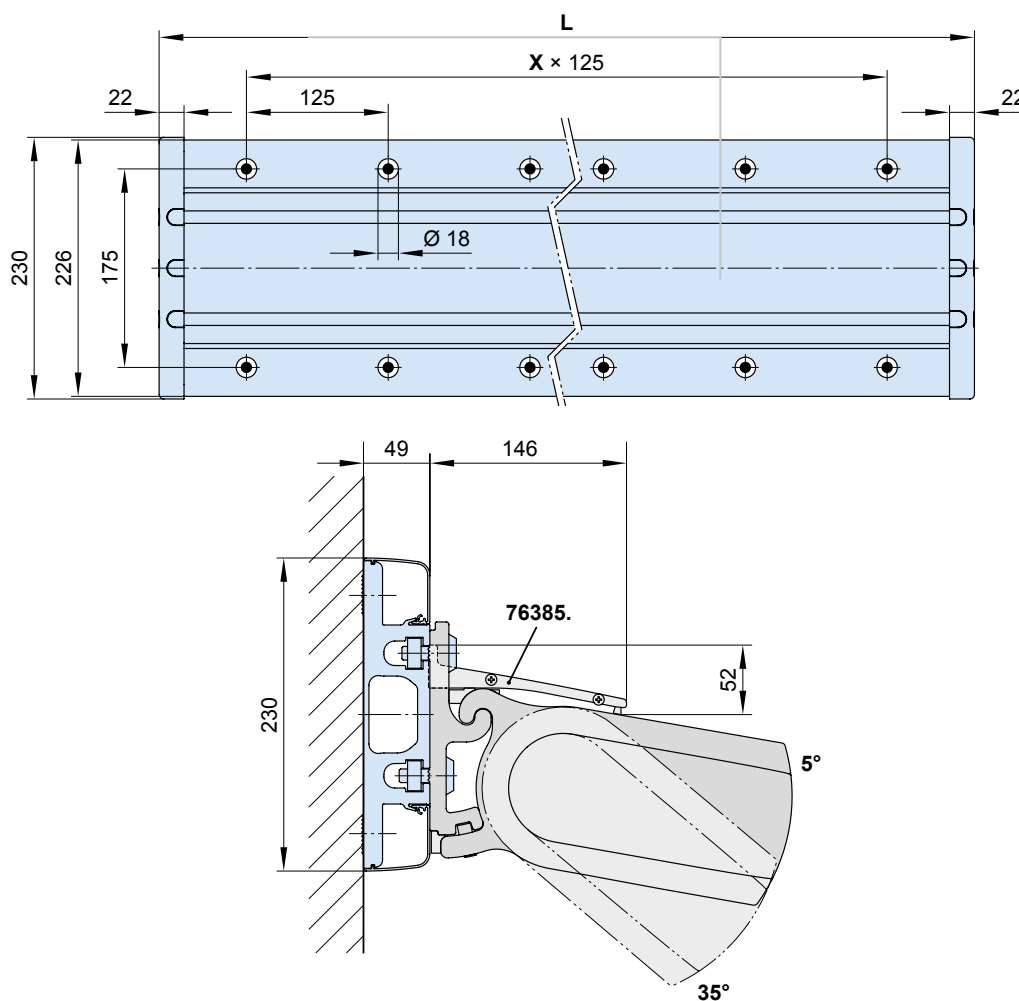
side plate
for wall sealing profile

including 2 pan-head
self-tapping screws

76386. and 2 × 735611

As a **continuous fixture profile**, the markilux panel will always be supplied to order on the basis of a technical drawing prepared in the factory in accordance with the awning specification.

The technical drawing shows the fixture points and pull-out forces and must be approved in writing.



76385. = wall sealing profile (standard width = awning width (**M**) – 311 mm; up to a maximum awning pitch of 35°)

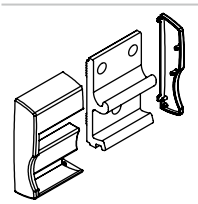
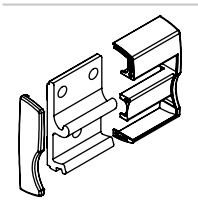
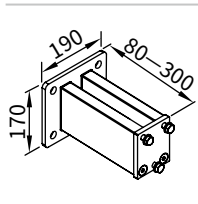
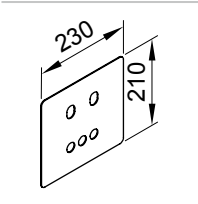
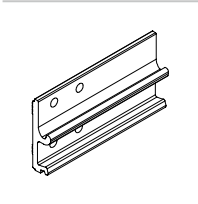
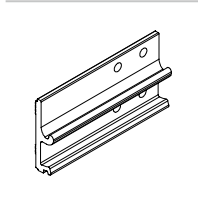
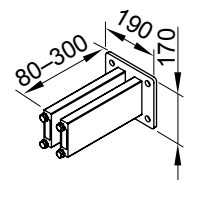
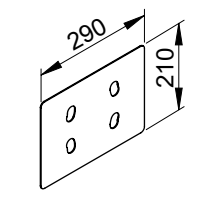
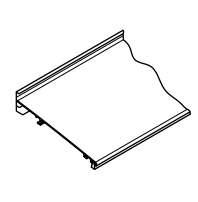

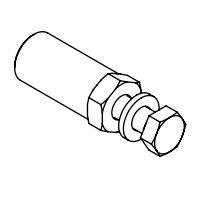
L = individual width, max. 7000 mm, (standard **L** = **M** + 20 mm)

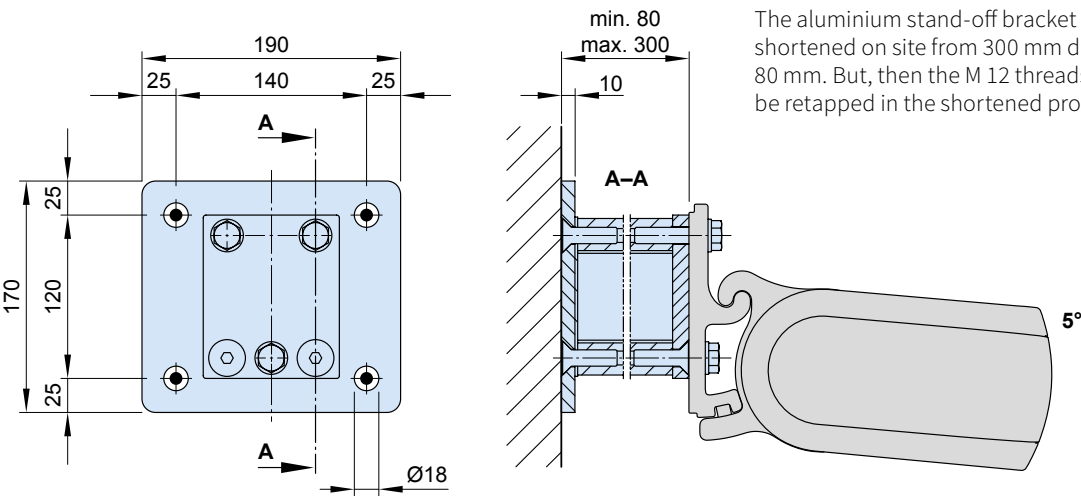
X = number of distances between the spots (depends on size)

dimensions in mm

Face fixture with stand-off bracket

Fixtures, fittings and accessories

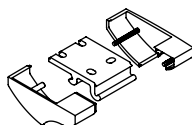
 <p>face fixture bracket cover cap left 100 mm</p> <p>75885.</p>	 <p>face fixture bracket cover cap right 100 mm</p> <p>75886.</p>	 <p>stand-off bracket 80–300 mm for face fixture bracket 100 mm incl. insulating element</p> <p>72872.</p>
 <p>cover plate for spacer plate and stand-off brackets in the case of external insulation 230 × 210 × 2 mm</p> <p>71843.</p>	 <p>face fixture bracket left 300 mm</p> <p>75877.</p>	 <p>face fixture bracket right 300 mm</p> <p>75878.</p>
 <p>Stand-off bracket for face fixture bracket 75877. and 75878. 80–300 mm incl. insulating element</p> <p>77968.</p>	 <p>cover plate for spacer plate and stand-off brackets in the case of external insulation 290 × 210 × 2 mm</p> <p>71841.</p>	 <p>wall sealing profile incl. brush seal by the metre</p> <p>76385. and 704241.</p>
 <p>side plate for wall sealing profile including 2 pan-head self-tapping screws</p> <p>76386. and 2 × 735611</p>	 <p>reduction bolt pack 10 pcs</p> <p>M 16 → M 12 M 16 → M 10 M 12 → M 10 M 10 → M 10</p>	



dimensions in mm

Top fixture

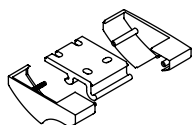
Fixtures, fittings and accessories



top fixture bracket
cover cap
left

100 mm

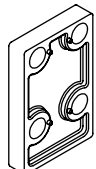
75887.



top fixture bracket
cover cap
right

100 mm

75888.

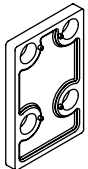


spacer plate for top
fixture

90 × 140 × 20 mm

N.B.!
Stack to a max. height
of 200 mm

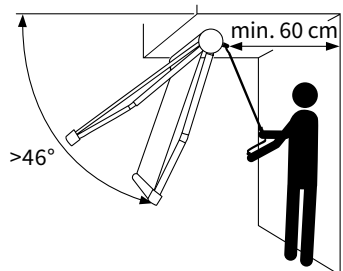
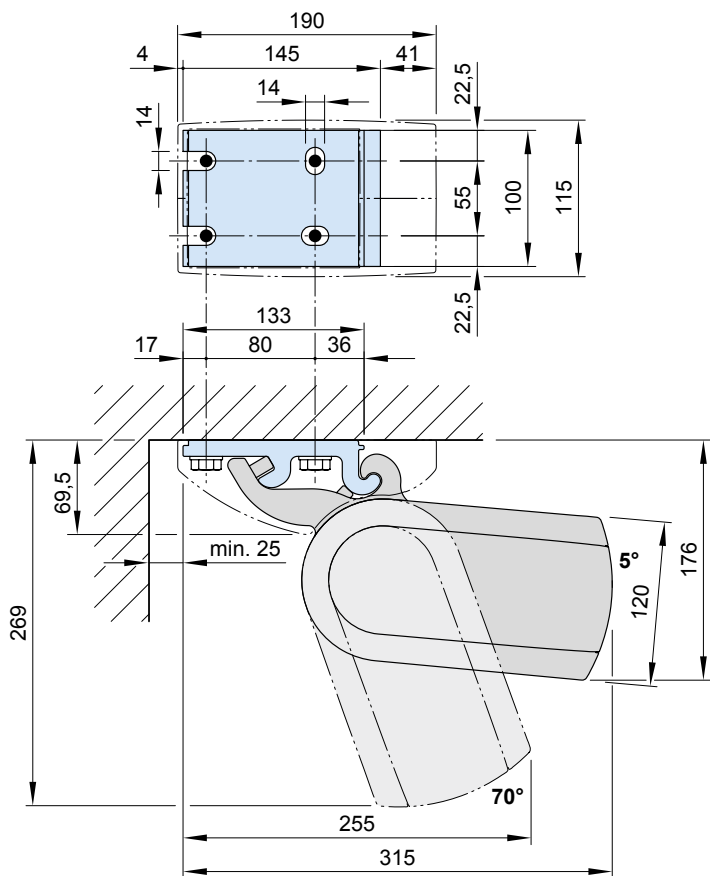
716311



spacer plate
for top fixture

90 × 140 × 12 mm

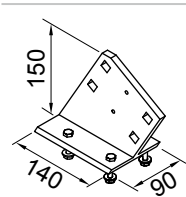
716411



N.B.! At a pitch of more than 46° to the horizontal there must be an accessible area behind the awning at least 60 cm deep to allow manual operation incl. operation via radio-controlled motor with manual override. There are no limitations with motor systems.

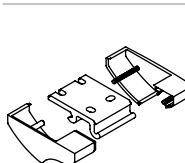
Eaves fixture

Fixtures, fittings and accessories



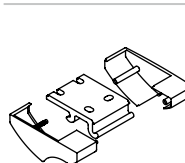
eaves fixture bracket
90 mm
150 mm plate

75889.



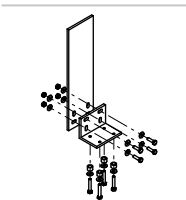
top fixture bracket
cover cap
left
100 mm

75887.



top fixture bracket
cover cap
right
100 mm

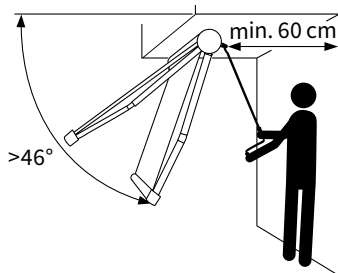
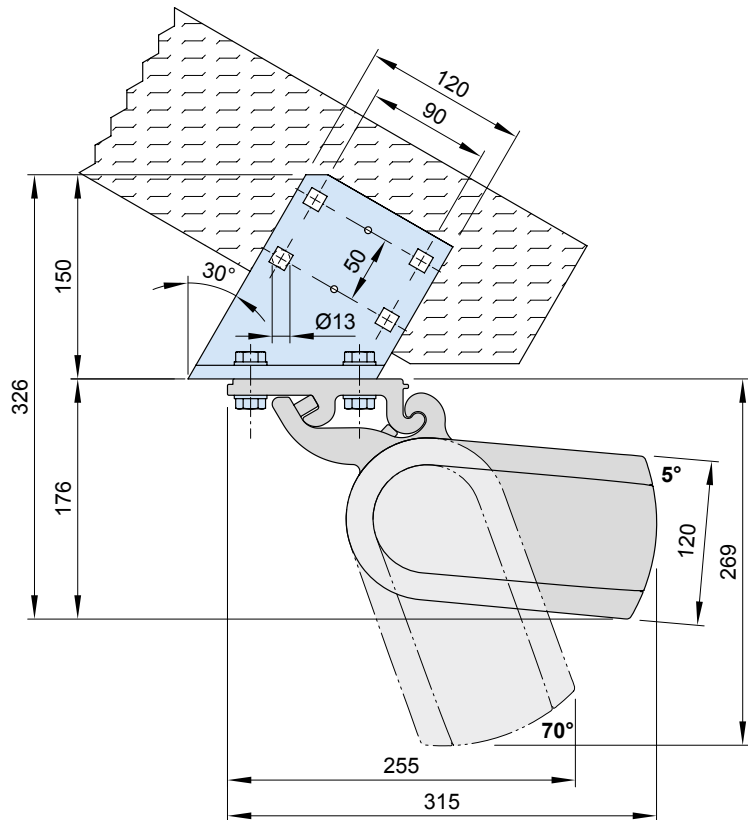
75888.



angle and plate for
eaves fixture
height of plate 500 mm
machine finish

716620

With eaves fixture bracket 150 mm (75889.)

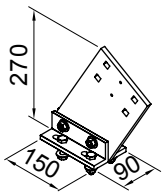


N.B.! At a pitch of more than 46° to the horizontal there must be an accessible area behind the awning at least 60 cm deep to allow manual operation incl. operation via radio-controlled motor with manual override. There are no limitations with motor systems.

dimensions in mm

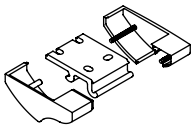
Eaves fixture

Fixtures, fittings and accessories



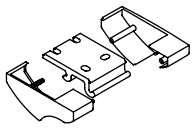
eaves fixture bracket
90 mm
height of flat plate
270 mm

71659.



top fixture bracket
cover cap
left
100 mm

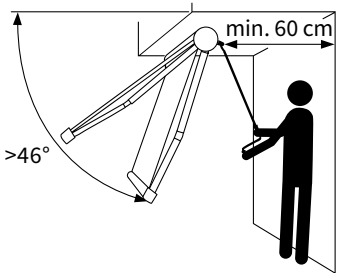
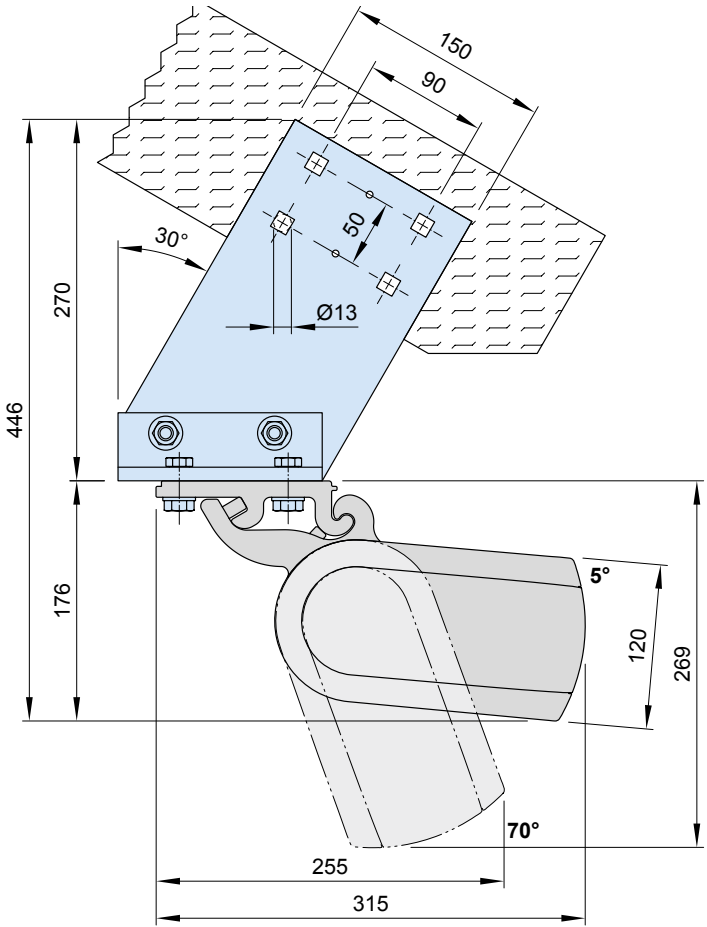
75887.



top fixture bracket
cover cap
right
100 mm

75888.

With eaves fixture bracket, top flat plate 270 mm (71659.)

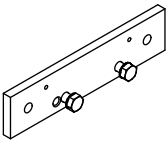


N.B.! At a pitch of more than 46° to the horizontal there must be an accessible area behind the awning at least 60 cm deep to allow manual operation incl. operation via radio-controlled motor with manual override. There are no limitations with motor systems.

dimensions in mm

Eaves fixture with additional plate

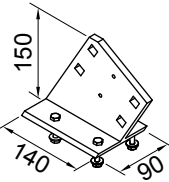
Fixtures, fittings and accessories



supplementary flat plate
for eaves fixture

260 × 60 × 12 mm

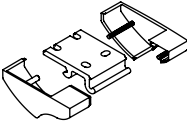
75383.



eaves fixture bracket
90 mm

150 mm plate

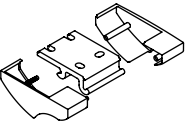
75889.



top fixture bracket
cover cap
left

100 mm

75887.

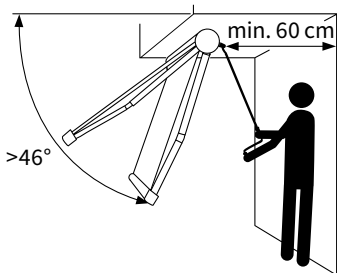
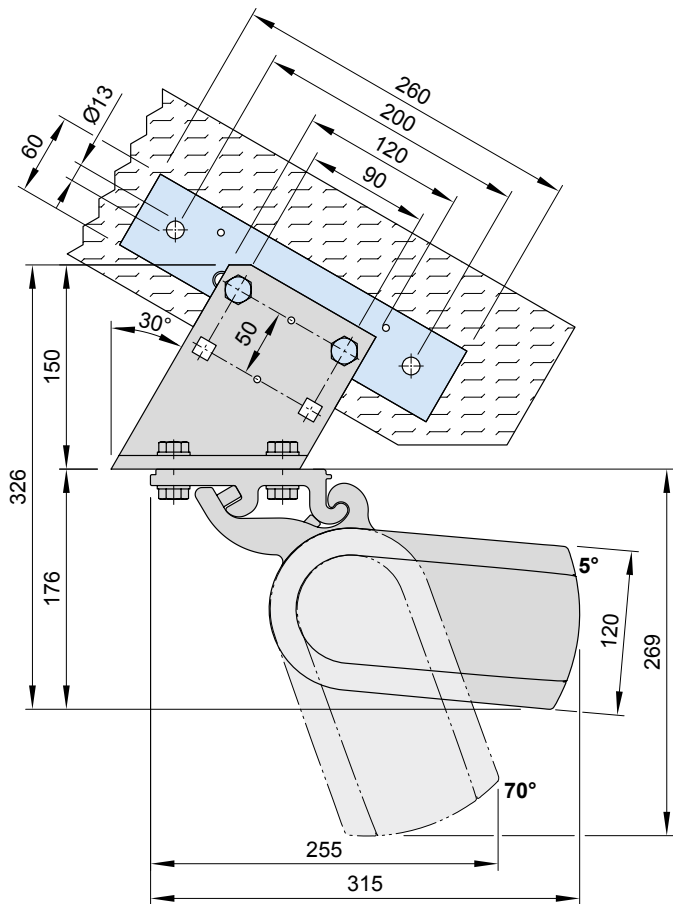


top fixture bracket
cover cap
right

100 mm

75888.

With eaves fixture bracket 150 mm (75889.)

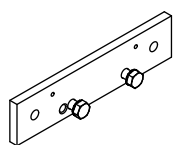


N.B.! At a pitch of more than 46° to the horizontal there must be an accessible area behind the awning at least 60 cm deep to allow manual operation incl. operation via radio-controlled motor with manual override. There are no limitations with motor systems.

dimensions in mm

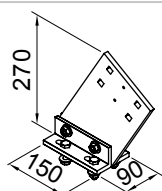
Eaves fixture with additional plate

Fixtures, fittings and accessories



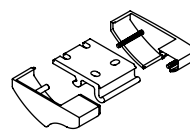
supplementary flat
plate
for eaves fixture
260 × 60 × 12 mm

75383.



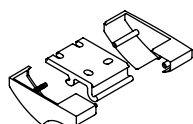
eaves fixture bracket
90 mm
height of flat plate
270 mm

71659.



top fixture bracket
cover cap
left
100 mm

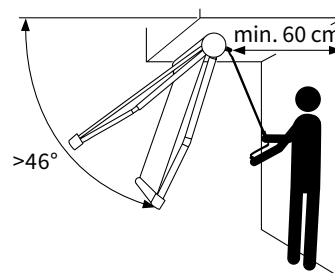
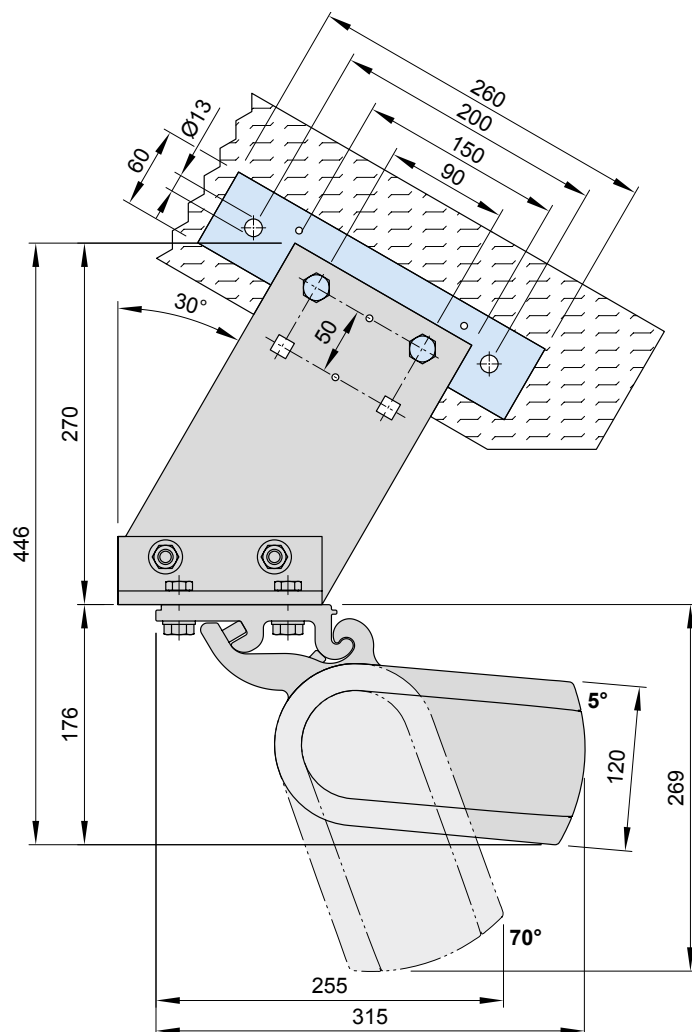
75887.



top fixture bracket
cover cap
right
100 mm

75888.

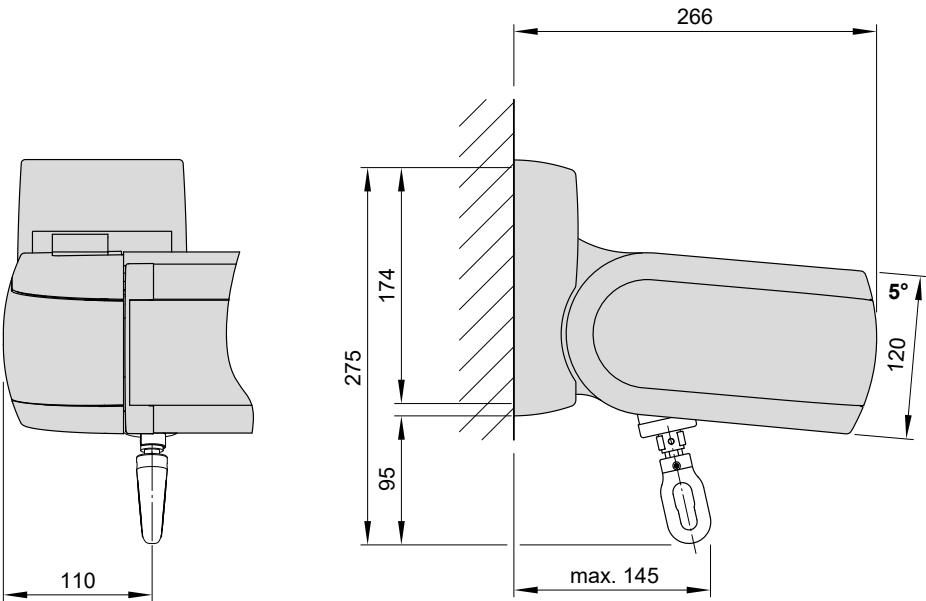
With eaves fixture bracket, top flat plate 270 mm (71659.)



N.B.! At a pitch of more than 46° to the horizontal there must be an accessible area behind the awning at least 60 cm deep to allow manual operation incl. operation via radio-controlled motor with manual override. There are no limitations with motor systems.

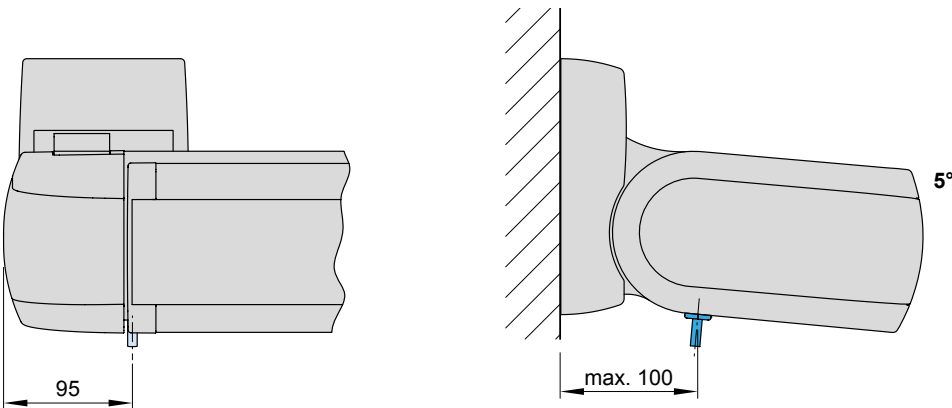
dimensions in mm

Face fixture, manual operation ¹⁾

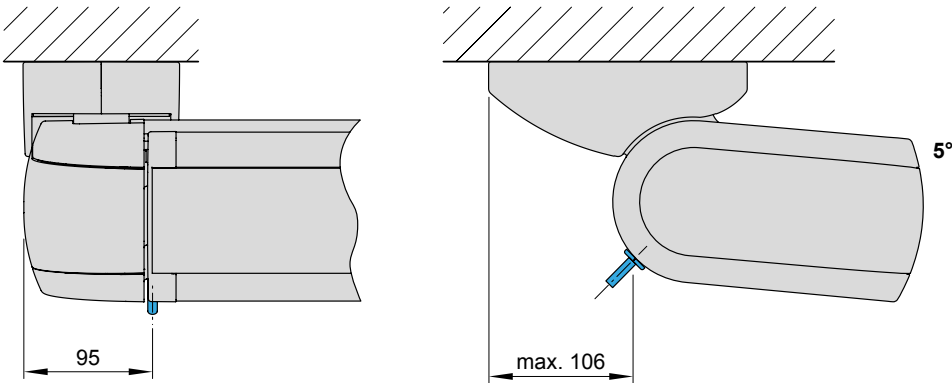


Motor / lighting cable exit point ^{1) 2)}

Face fixture



Top fixture



1) depending on the operation side, left or right

2) depending on the accessories ordered, one or two power supply cables (awning motor | lighting)

dimensions in mm

- 01
- 02
- 03
- 04
- 05**
- 06
- 07
- 08
- 09
- 10
- 11
- 12
- 13
- 14
- 15
- 16
- 17