



Cassette awning

markilux 970

Aesthetics and technology perfectly united –
the compact cassette awning in a timeless, purist design.



Excerpt on the colours of the
cassette and front styling panel
from the main catalogue. You can
access the complete chapter from
the catalogue using the QR code.



markilux.com

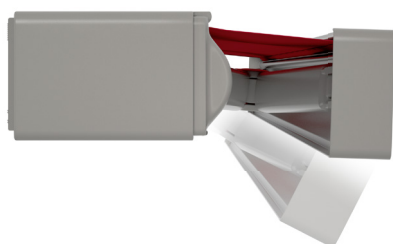
markilux
safe timeless beautiful

Product characteristics

Wind resistance class 2
Beaufort 5 → 7.5–10.4 m/s → 28–37 km/h → 17–23 mph



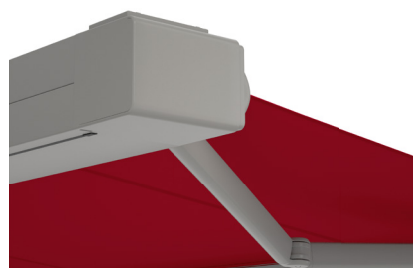
1 face fixture, maximum pitch of 30°



1 top fixture



1 top fixture, view from the rear and below



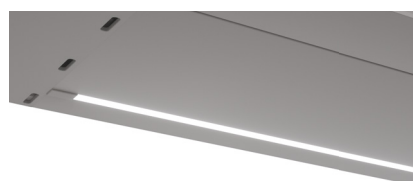
2 shadeplus¹⁾



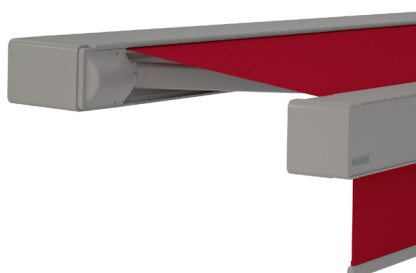
4 bionic tendon made of high-tech fibres for optimum power transference



3 LED-Line in the cassette¹⁾



2 shadeplus, during extension¹⁾



5 arm bearer with tilt device technology, integrated windlock mechanism



1) Optional accessories

Product characteristics

Description

- angular cassette awning built in an unobtrusive style, with ingenious accessory options and unique fixture technology

Special features

- option of shadeplus up to a projection of 300 cm – vertical protection against low-lying sun and inquisitive glances integrated into the front profile, can be operated by radio remote control
- option of directional LED Line fitted to the underside of the cassette which provides an appealing atmosphere in the evening
- individual combination of awning colour and screen profile colour possible
- the special cassette profile surrounds the roller tube even when the awning is extended and lends the awning a harmonious, closed appearance
- the straight lines with smooth front panel suit a minimalistic building style perfectly
- the design characteristics allow the awning to be fitted into niches and reveals
- the virtually invisible face and top fixture brackets mean the awning cassette fits flat against the building
- the tilt device technology with integrated windlock mechanism functioning as arm bearers ensures the awning closes cleanly regardless of the pre-set pitch

Dimensions

- cassette in the standard version: depth 266 mm, height 140 mm
- single unit: minimum width 195 cm at the smallest projection of 150 cm, maximum width 500 cm at the largest projection of 350 cm or 600 cm at a maximum projection of 300 cm

roller tube and lateral bearings

- round roller tube Ø 85 mm with keyway, galvanised steel – excellent stability, ensures near perfect cover performance even at the largest widths
- the cassette side cap is made of die-cast aluminium, powder coated

Awning profiles

- extruded aluminium, in façade quality, powder coated
- two-piece cassette with clever inner profile – providing the awning cover with optimum protection against the elements
- angular front profile with integrated rain gutter and a smooth front panel

Folding arms

- profiles in extruded aluminium, in façade quality, powder coated
- moving parts made of drop-forged aluminium – the arms are therefore extremely fracture resistant
- pivot bolts in stainless steel run in Teflon-coated bronze bushes - practically maintenance free, virtually silent and extremely hard wearing
- power transference via the innovative bionic tendon at the elbow joint, made of high tensile, high-tech fibres low in friction, noiseless, insensitive to corrosion and UV resistant

End caps

- the cassette end caps are made of high-quality plastic, powder coated
- the internal caps to cover the internal arm bearers at the side are made of die-cast aluminium
- the front profile end caps are made of die-cast aluminium, powder coated, with water drainage holes

Fixture brackets

- face fixture, top fixture, eaves fixture
- extruded aluminium, powder coated
- Awning pitch adjustment range 5° to 30°
- spacer plates, stand-off brackets and other accessories are available

Frame and end cap colours

markilux frame colours without surcharge

traffic white, RAL 9016

metallic aluminium, RAL 9006

grey brown, similar to RAL 8019



off-white textured finish, 5233 ¹⁾

stone grey metallic, 5215 ¹⁾

anthracite metallic, 5204 ¹⁾



havana brown textured finish, 5229 ¹⁾



Non-standard powder-coated finish

Bespoke frame colours incur a surcharge – matt, metallic, finely textured and pearl finishes as well as other colour ranges (DB, Tiger etc.) on request. All frame colours are available at a surcharge with enhanced corrosion protection.

Colours may differ slightly from those depicted in both hue and finish.

¹⁾ textured finish

Combination options

All standard styling panel colours can be combined at will with the standard frame colours ²⁾

Frame colour Stone grey metallic 5215
Front panel anthracite metallic 5204



Frame off-white textured finish, 5233
Front panel anthracite metallic, 5204



Frame colour Traffic white RAL 9016
Front panel metallic aluminium, RAL 9006



Frame colour anthracite metallic 5204
Front panel stone grey metallic, 5215

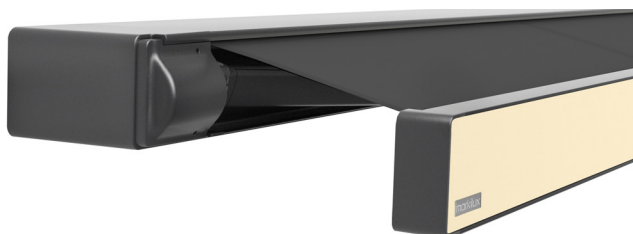


²⁾ Illustrations by way of example; colours may differ slightly from those depicted in both hue and finish.

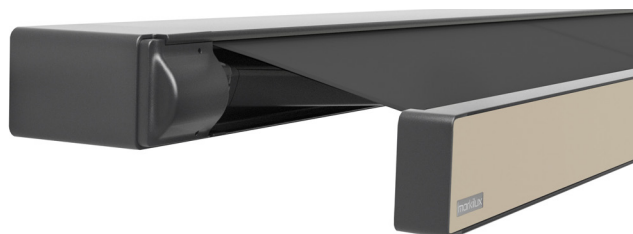
Additional front panel colours

The additional styling panel colours can be combined at will with all the standard frame colours ¹⁾

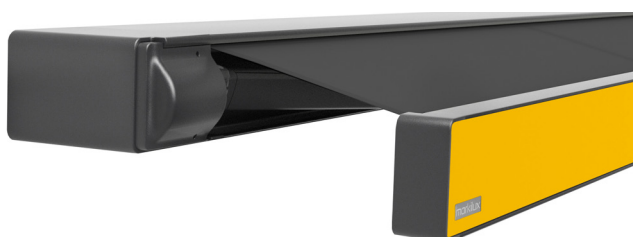
light ivory RAL 1015 matt



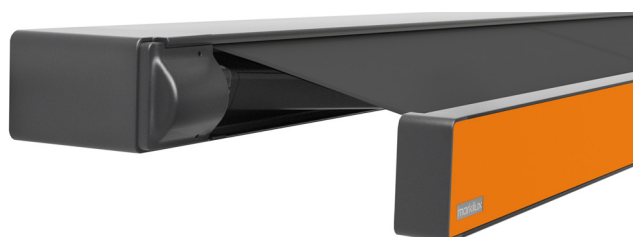
new champagne 5062 matt



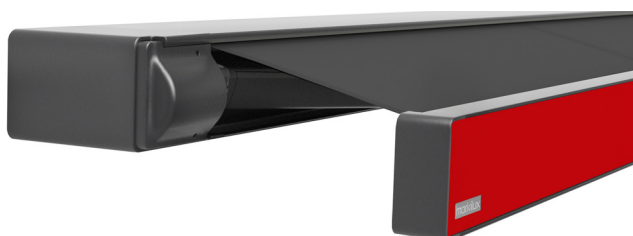
golden yellow RAL 1004 matt



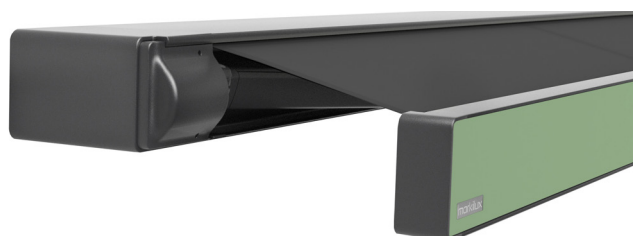
deep orange RAL 2011 matt



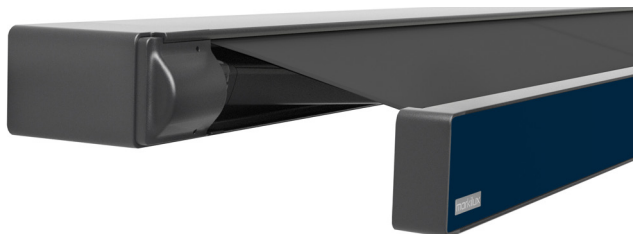
crimson RAL 3002 matt



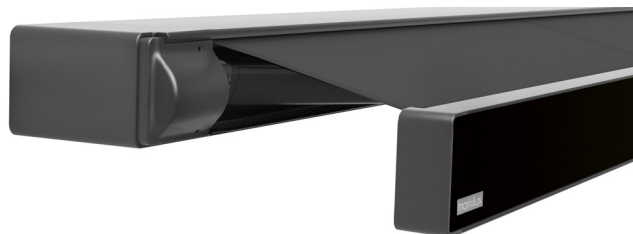
pale green RAL 6021 matt



steel blue RAL 5011 matt



jet black RAL 9005 matt



Colours may differ slightly from those depicted in both hue and finish.

¹⁾ Illustrations by way of example; fabric pattern with matching front panel.

Optional accessories

drop valance, manual or motor operation
LED Line in the cassette
infrared heater 2500 W
infrared heater 2500 W with integrated radio-controlled receiver 868 MHz radio-controlled io
Automatic controls (light, wind, rain)



N.B. Important background information can be found in the chapter "Optional Accessories".

Fixture options

face fixture bracket left, 100 mm	72826.
face fixture bracket right, 100 mm	72827.
fixture plate A 430 × 160 × 12 mm	72870.
fixture plate B 300 × 400 × 12 mm	75325.
fixture plate C 310 × 130 × 12 mm	72526.
markilux panel 250 × 230 × 49 mm	76308.
markilux panel continuous	701104
vertical fixture rail	62421.
stand-off bracket 80–300 mm	72872.
top fixture bracket left 90 mm	72860.
top fixture bracket right 90 mm	72861.
eaves fixture bracket left 90 mm, 150 mm top plate	72874.
eaves fixture bracket right, 90 mm, 150 mm top plate	72875.
eaves fixture bracket 90 mm, plate 270 mm	71659.
flat plate and angled bracket for eaves fixture, machine finish aluminium, 500 mm	716620
spreader plate 260 × 60 × 12 mm, for eaves fixture bracket 90 mm	75383.

Dimensions and configuration options

Single unit


Order dimensions		Awning width								Minimum width	
		250	300	350	400	450	500	550	600	Motor	Crank handle
		195 250	251 300	301 350	351 400	401 450	451 500	501 550	551 600		
H	150	1) —	—	—	—	—	—	—	—	195	195
	200	1) —	—	—	—	—	—	—	—	245	245
	250	—	1) —	—	—	—	—	—	—	295	295
	300	—	—	1) —	—	—	—	2) —	2) —	345	345
	350	—	—	—	1) 2) —	2) —	2) —	—	—	395	395


dimensions in cm

1) = please note the minimum widths!

2) = drop valance not available

H = projection

 = 2 folding arms,
2 brackets

 = 2 standard arms

Operation

	standard	optional
crank handle	✓	—
spring-assisted crank handle	—	✓
hard-wired motor	—	✓
silentec motor (optionally with an external io / RTS receiver)	—	—
radio-controlled motor io, 868 MHz	—	✓
433 MHz Funkmotor RTS	—	✓
868 MHz radio-controlled motor io, with manual override	—	—

Coupled awnings

not available

Awning cover

	fabric pattern no.	standard	optional
sunvas	300.. – 315..	✓	—
sunsilk	324.. / 328.. / 369..	✓	—
sunbow ¹⁾	411.. - 427..	✓	—
smart art	340..	—	✓
perla FR	371.. / 372..	—	✓

1) up to max. 300 cm projection available

Drop valance^{1) 2)}

	standard	optional
height 170 cm	—	—
maximum projection 300 cm ³⁾	—	—
crank handle	✓	—
hard-wired motor	—	✓
radio-controlled motor io, 868MHz	—	✓
radio-controlled motor RTS, 433MHz	—	✓
fabric pattern sunvas / sunsilk / sunbow / transolair / vuscreen Alu / glass fibre screen Serge 600	—	—

1) a shadeplus is impractical for fixture in a top well and in a reveal if top or eaves fixture is used

2) the seams in covers made from fabrics 120 cm wide run across the awning. As a result, a fabric with a textured or flecked pattern will take on an appearance different from that of the awning cover if made from the same fabric.

3) olding arms in a taller version (with cable conduits); Not available in the dimensions [501–600] × 300 cm

01

02

03

04

05

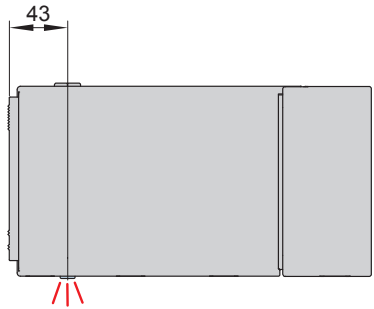
06

07

08

Lighting options

LED-Line in the cassette



dimensions in mm

Technical specification

operating voltage	230 V, 50 Hz
power output per metre	10 W / metre
number of LEDs per metre	120 LEDs / metre
light source	LED (12 V)
number of transformers	1 unit
light temperature	warm white
IP protection class	IP 44
service life	approx. 15.000 h

Controls

standard optional

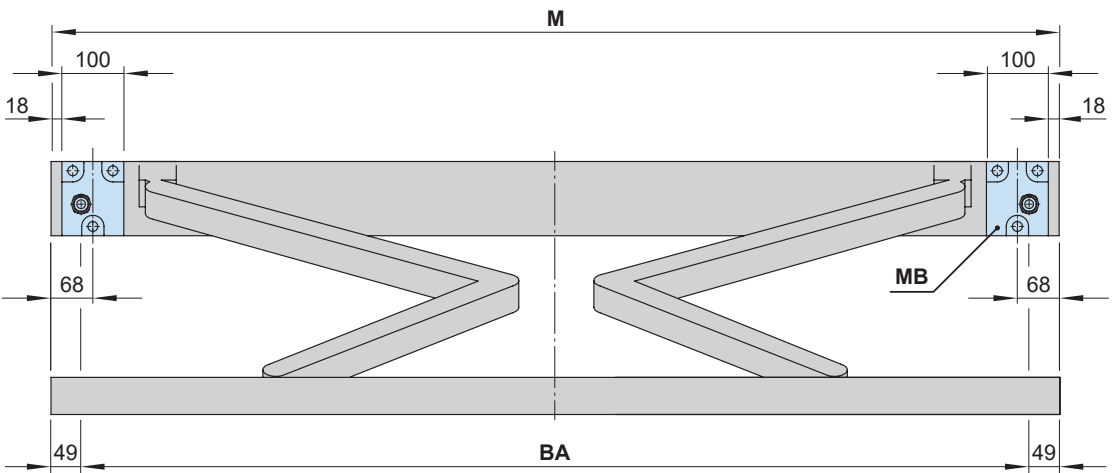
radio-controlled dimmer io 868 MHz	✓	—
radio-controlled dimmer RTS 433 MHz	✓	—

Electrical connection

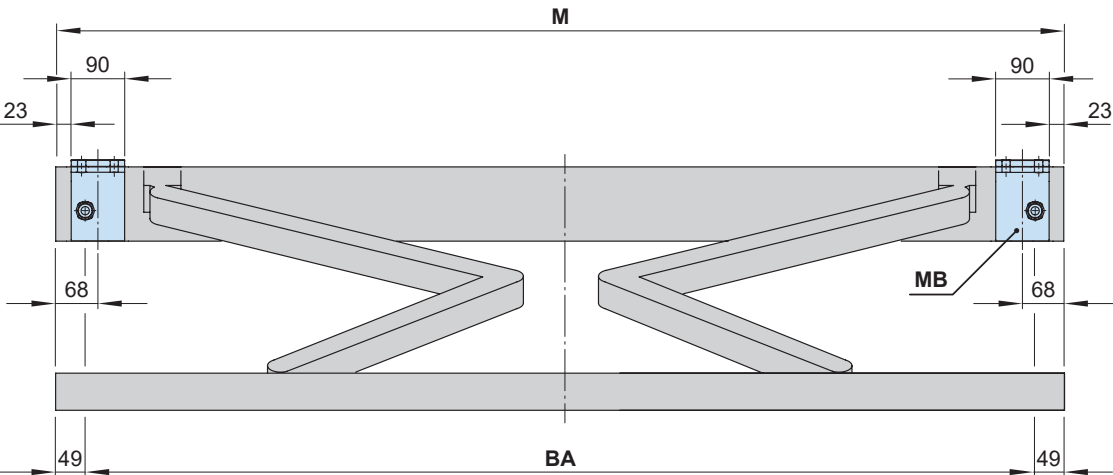
power supply cable H05RN-F 3G1 (3 × 1 mm ²) with open end
--

Bracket fixture range

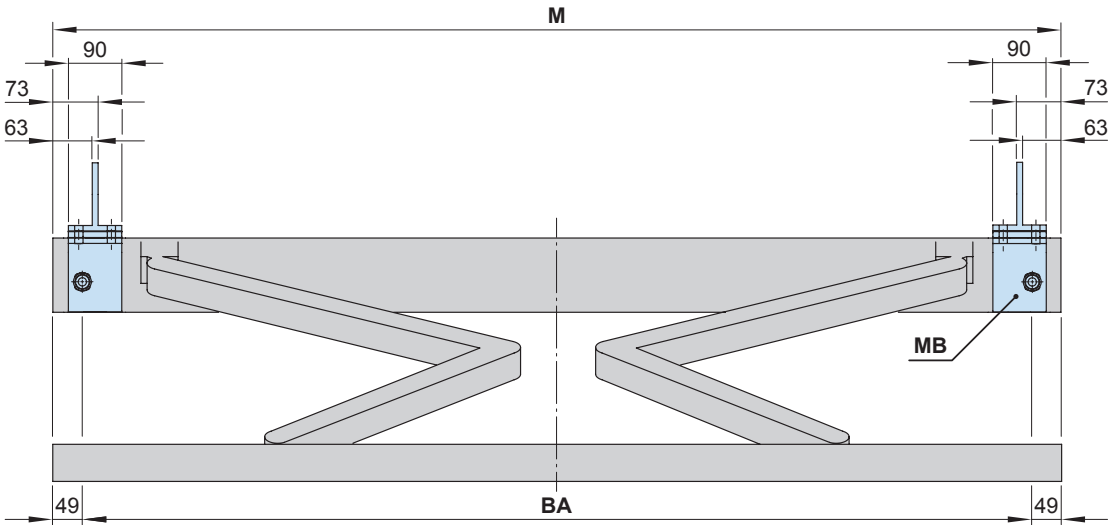
Face fixture



Top fixture



Eaves fixture



- BA = width between fixture points
- MB = bracket fixture range
- M = order width = awning width

dimensions in mm

No. of brackets | No. of fixing points

Order dimensions		Awning width							
		250	300	350	400	450	500	550	600
		195 250	251 300	301 350	351 400	401 450	451 500	501 550	551 600
BHT		No. of brackets No. of fixing points							
W	10	2 6							
BP		A 2 16		B 2 8			C 2 12		
PA		2 8							
DA / DE	9	2 8							

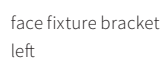
dimensions in cm

N.B! If awnings are installed directly next to one another, a minimum distance of 50 mm must be maintained between each awning!

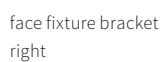
The **pull-out forces** necessary for determining the correct fixing materials necessary to meet wind resistance class 2 (Beaufort 5) can be found in the password-protected dealer area of the pro.markilux.com website under “Pull-out Forces”.

- BHT** = bracket width
- BP** = spreader plate **A** or **B**, to be positioned behind the folding arm
- DA** = eaves fixture brackets
- DE** = top fixture brackets
- PA** = markilux panel, fixture profile, width 250 mm
- W** = face fixture brackets

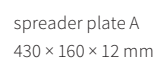
Fixtures, fittings and accessories



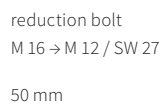
72826.



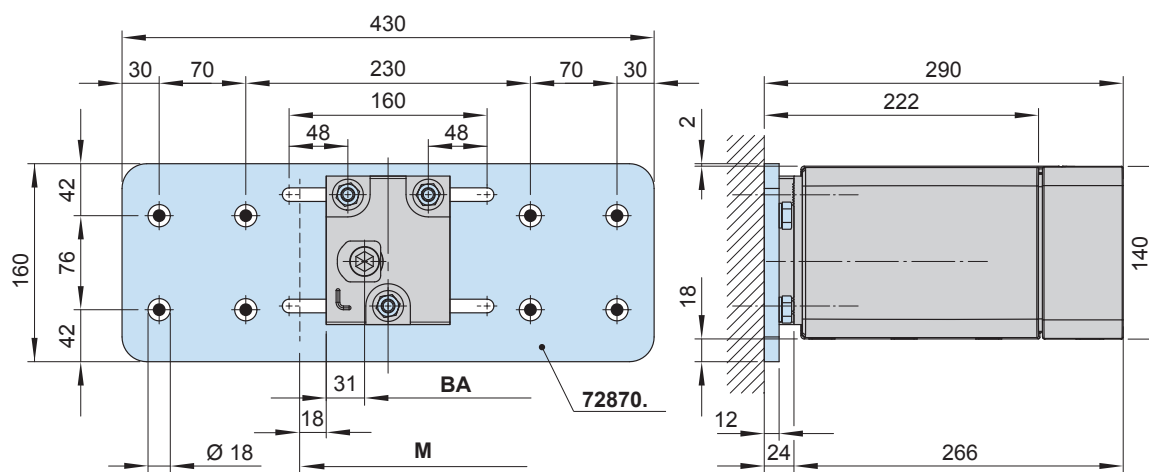
72827.



72870.



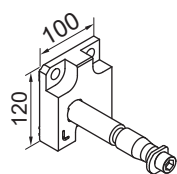
753891



dimensions in mm

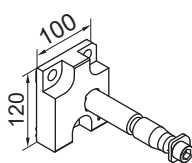
Face fixture with spreader plate B

Fixtures, fittings and accessories



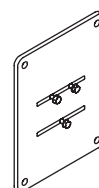
face fixture bracket
left

72826.



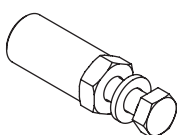
face fixture bracket
right

72827.



spreader plate B
300 × 400 × 12 mm

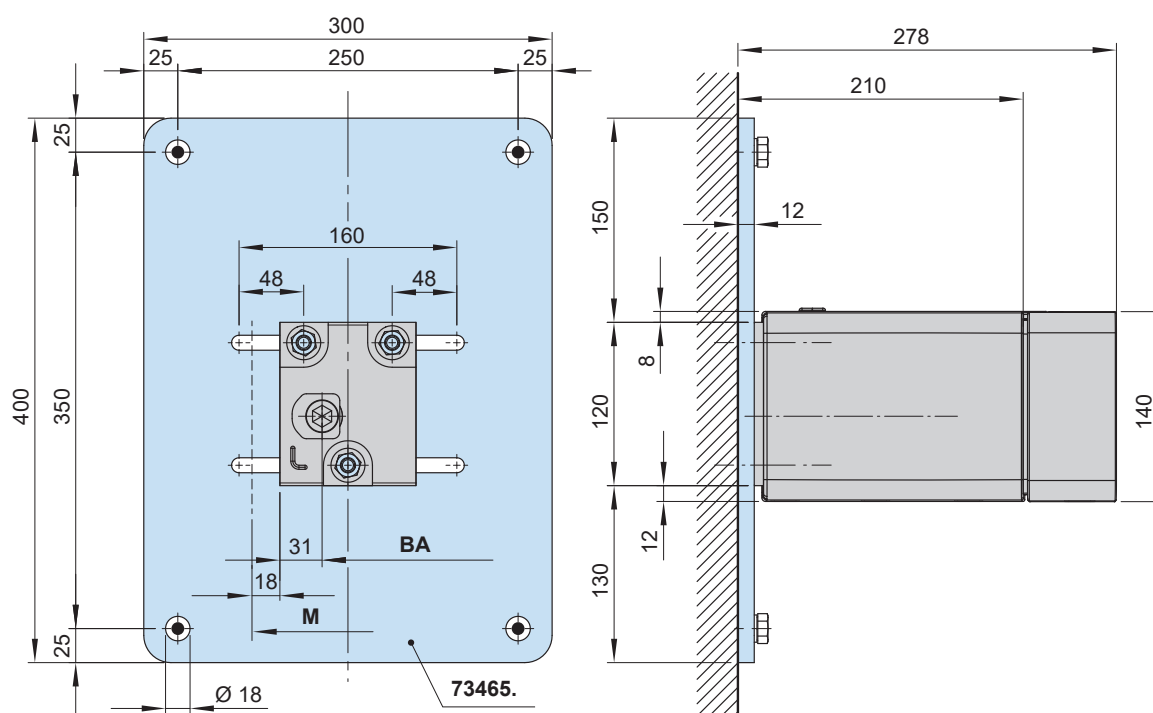
73465.



reduction bolt
M 16 → M 12 / SW 27

50 mm

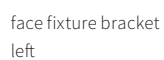
753891



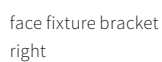
BA = width between fixture points
M = **order width** = awning width

dimensions in mm

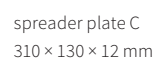
Fixtures, fittings and accessories



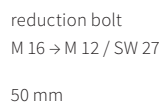
72826.



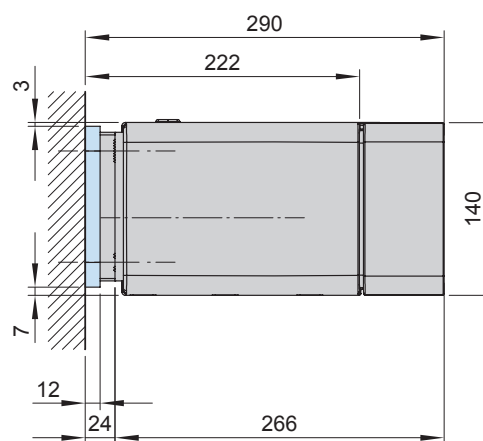
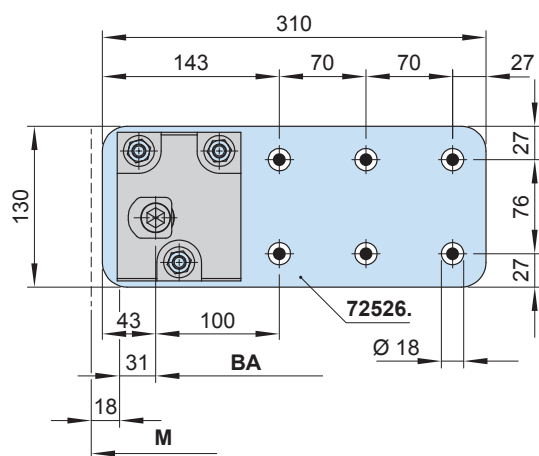
72827.



72526.



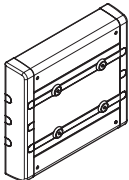
753891



dimensions in mm

Face fixture using the markilux panel 250 mm wide

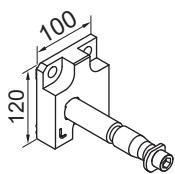
Fixtures, fittings and accessories



markilux panel
250 × 230 × 49 mm

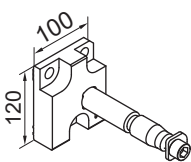
with decorative profiles
and end caps

76308.



face fixture bracket
left

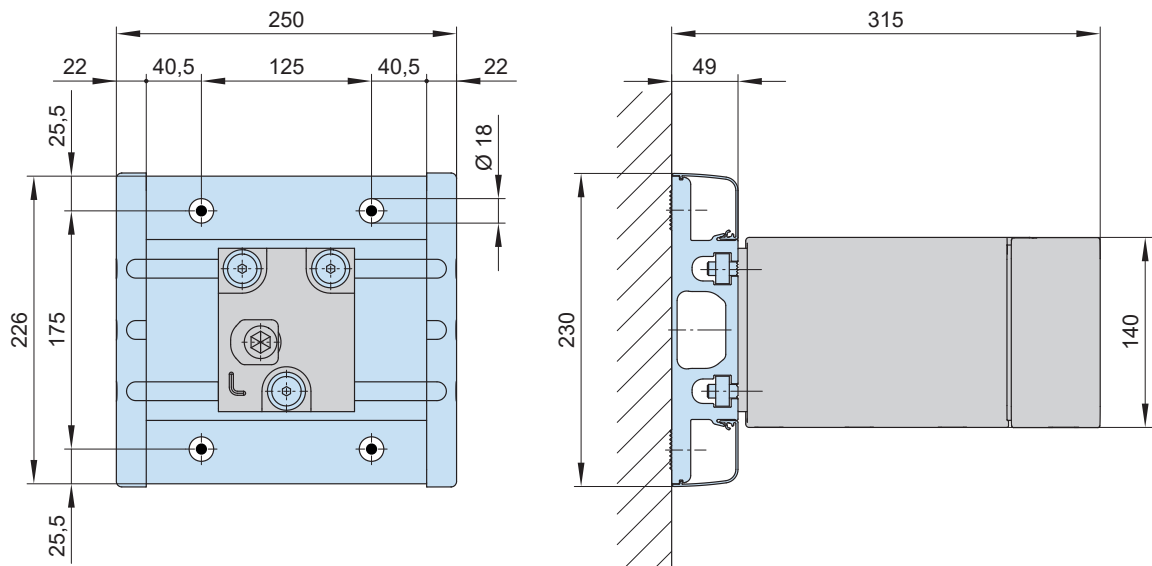
72826.



face fixture bracket
right

72827.

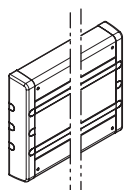
- 01
- 02
- 03
- 04
- 05
- 06
- 07
- 08



dimensions in mm

Face fixture with markilux panel continuous

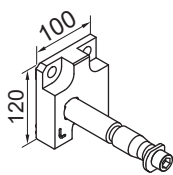
Fixtures, fittings and accessories



markilux panel
continuous

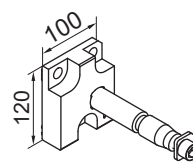
with decorative profiles
and end caps

701104



face fixture bracket
left

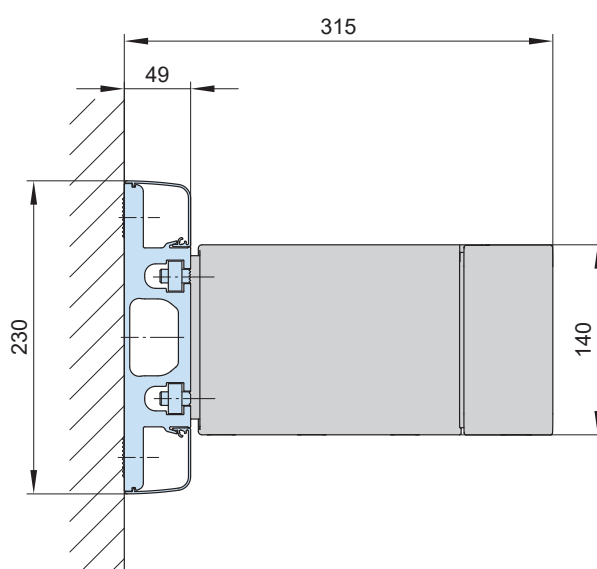
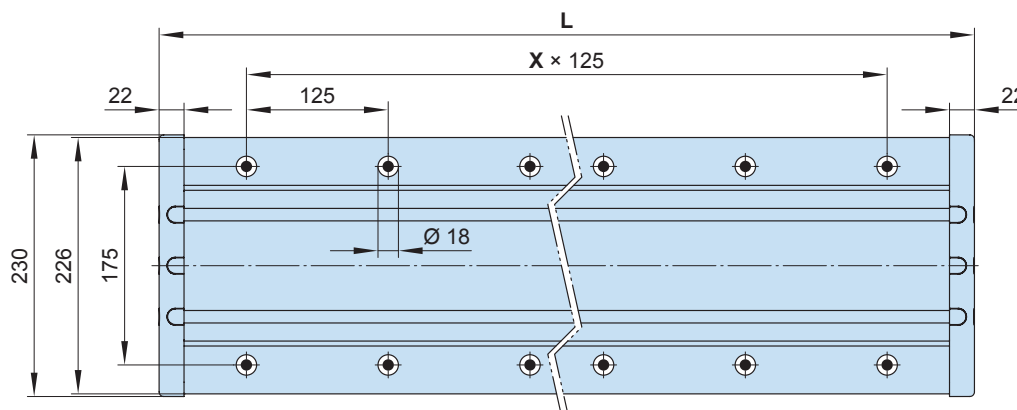
72826.



face fixture bracket
right

72827.

As a **continuous fixture profile** the markilux panel will always be supplied to order on the basis of a technical drawing prepared in the factory in accordance with the awning specification.




- L** = individual width, max. 7000 mm
x = fixing point separation, **by way of example**

dimensions in mm

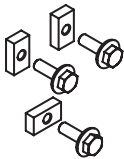
Face fixture with vertical fixture rail

Fixtures, fittings and accessories



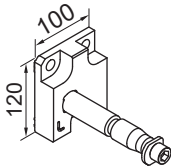
Vertical fixture rail

62421.



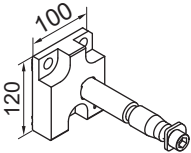
Fixing material for vertical fixture rail

624291



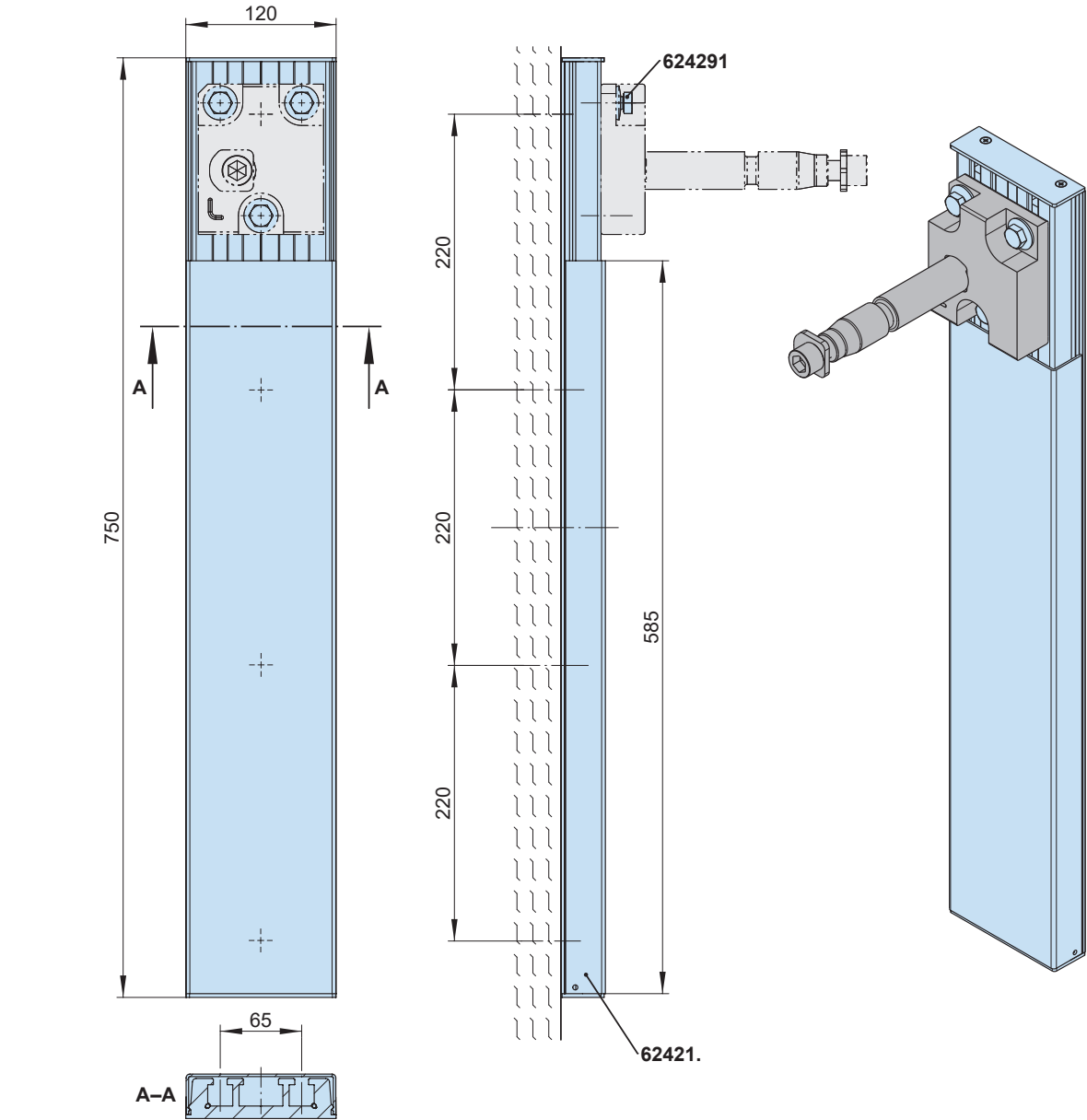
face fixture bracket left

72826.



face fixture bracket right

72827.

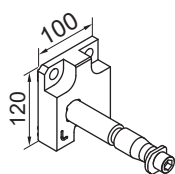


62421. = Sub-assembly vertical fixture rail
624291 = Sub-assembly fixing material for vertical fixture rail

dimensions in mm

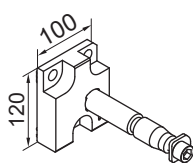
Face fixture with stand-off bracket

Fixtures, fittings and accessories



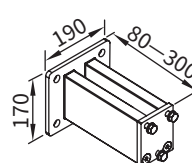
face fixture bracket
left

72826.



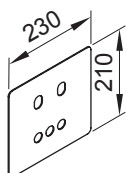
face fixture bracket
right

72827.



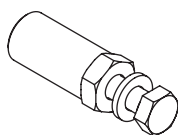
stand-off bracket
80–300 mm
for face fixture
bracket 100 mm
incl. insulating element

72872.



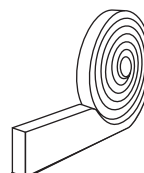
cover plate for spacer
plate and stand-off
brackets in the case of
external insulation
230 × 210 × 2 mm

71843.



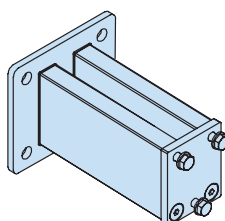
reduction bolt
M 16 → M 12 / SW 27
50 mm

753891

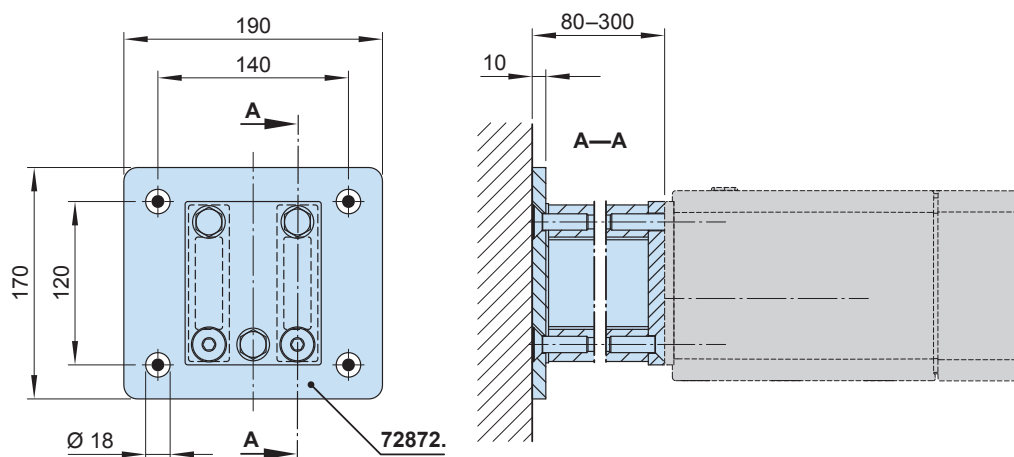


compression tape
PU soft foam material
to eliminate gaps, in
rolls of 15 m, gap size
from 3–7 mm, with a
minimum resistance to
water ingress of 600
Pa, grey

795721



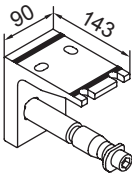
The aluminium stand-off bracket can be shortened on site from 300 mm down to 80 mm. But, then the M 12 threads must be retapped in the shortened profiles.



dimensions in mm

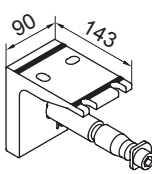
Top fixture

Fixtures, fittings and accessories



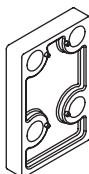
top fixture bracket
left

72860.



top fixture bracket
right


72861.



spacer plate for top
fixture
90 × 140 × 20 mm

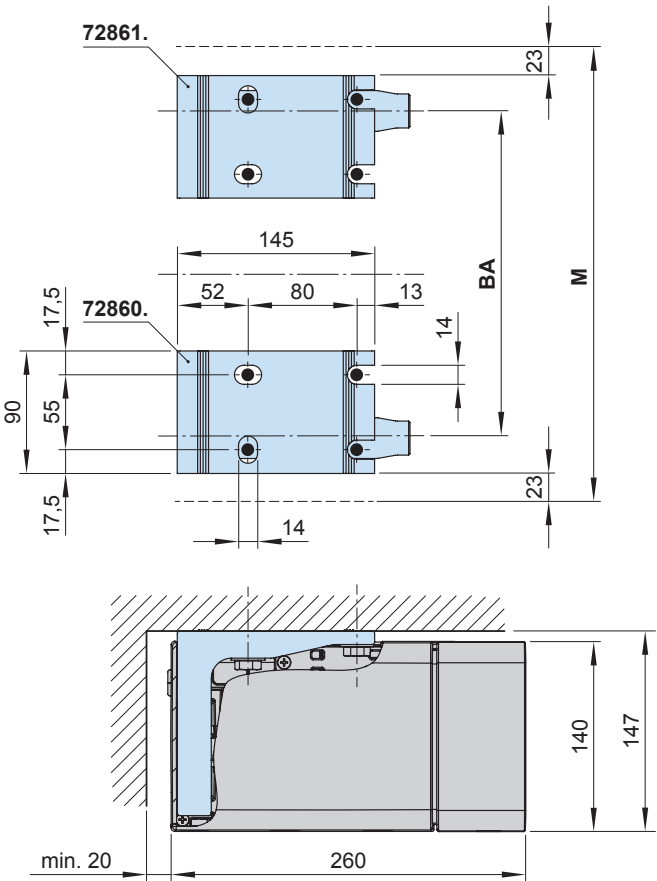
N.B!
Stack to a max. height
of 200 mm

716311



spacer plate
for top fixture
90 × 140 × 12 mm

716411

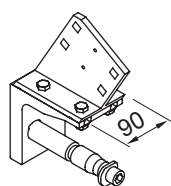


BA = width between fixture points
M = order width = awning width

dimensions in mm

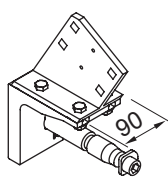
Eaves fixture

Fixtures, fittings and accessories



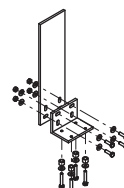
eaves fixture bracket
left
height of flat plate
150 mm

72874.



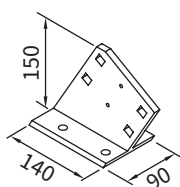
eaves fixture bracket
right
height of flat plate
150 mm

72875.



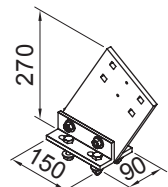
angle and plate for
eaves fixture
height of plate 500 mm
machine finish

716620



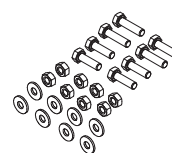
eaves fixture bracket
90 mm
height of flat plate
150 mm

71612.



eaves fixture bracket
90 mm
height of flat plate
270 mm

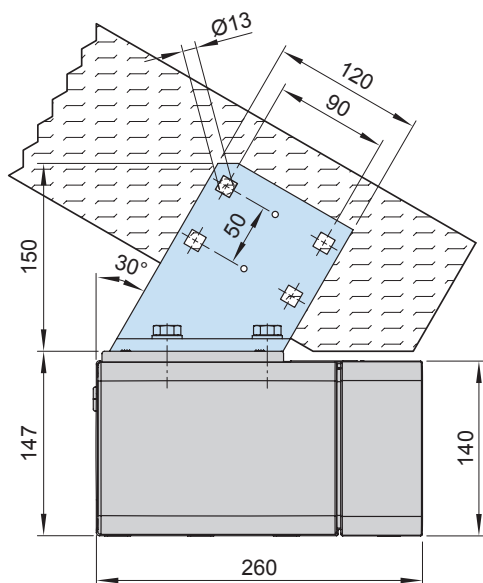
71659.



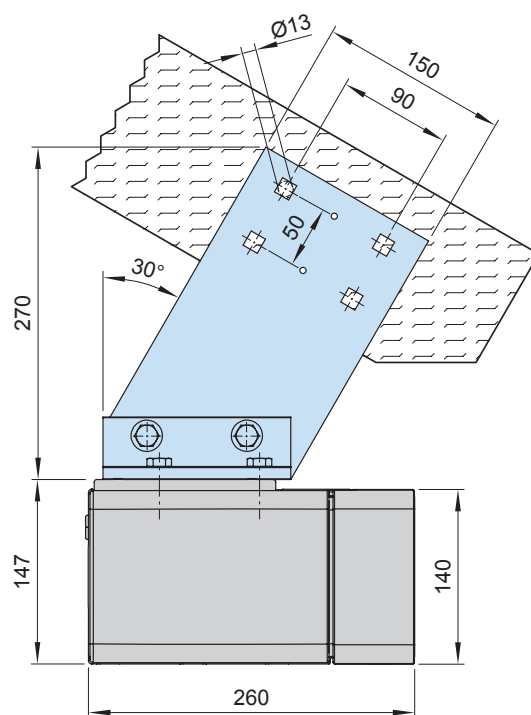
accessories
for two eaves fixture
brackets 71612.

799601

With eaves fixture bracket 150 mm (71612.)



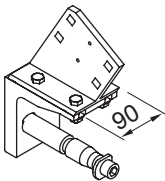
With eaves fixture bracket 270 mm (71659.)



dimensions in mm

Eaves fixture with additional plate

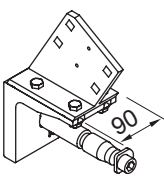
Fixtures, fittings and accessories



eaves fixture bracket
left

height of flat plate
150 mm

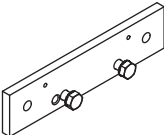
72874.



eaves fixture bracket
right

height of flat plate
150 mm

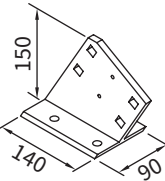
72875.



supplementary flat plate
for eaves fixture

260 × 60 × 12 mm

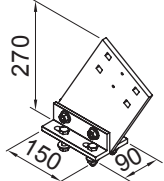
75383.



eaves fixture bracket
90 mm

height of flat plate
150 mm

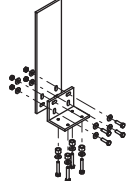
71612.



eaves fixture bracket
90 mm

height of flat plate
270 mm

71659.

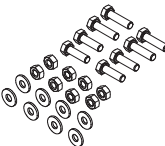


angle and plate for
eaves fixture

height of plate 500 mm

machine finish

716620

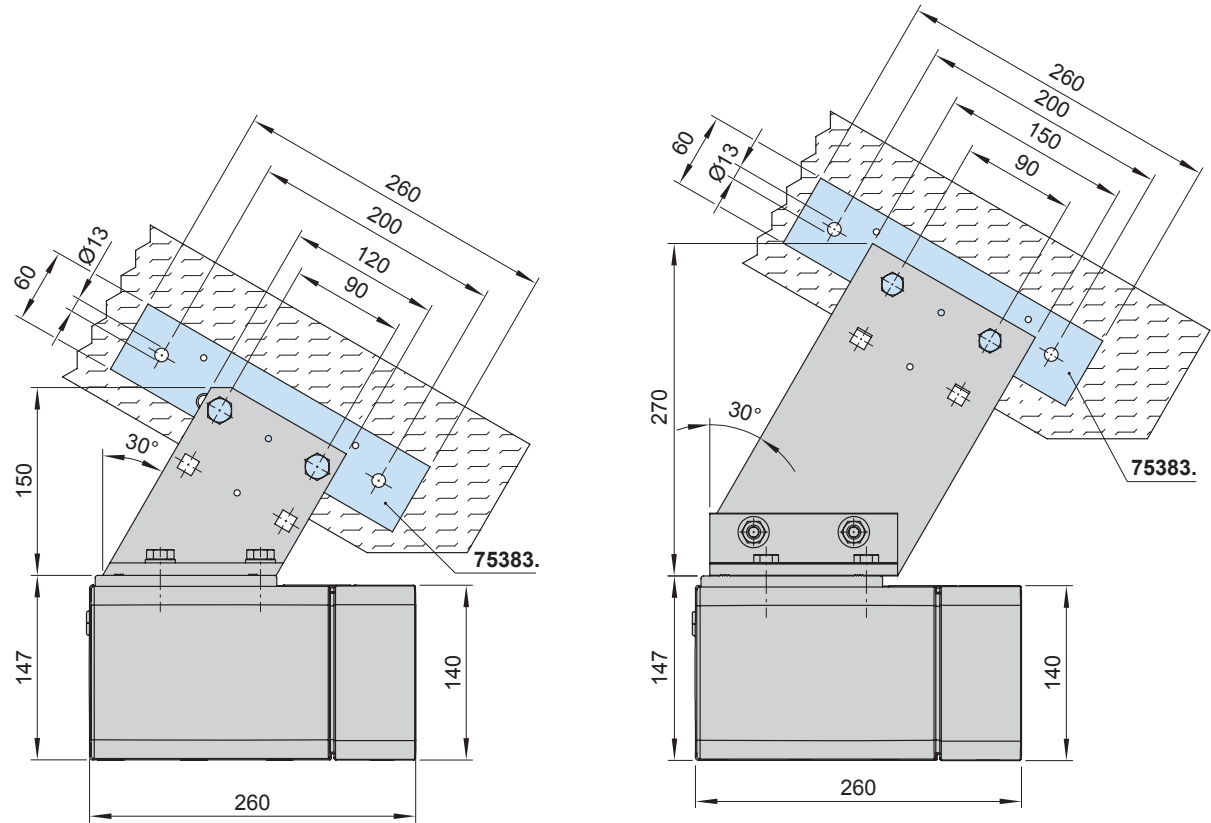


accessories
for two eaves fixture
brackets 71612.

799601

With eaves fixture bracket 150 mm (71612.)

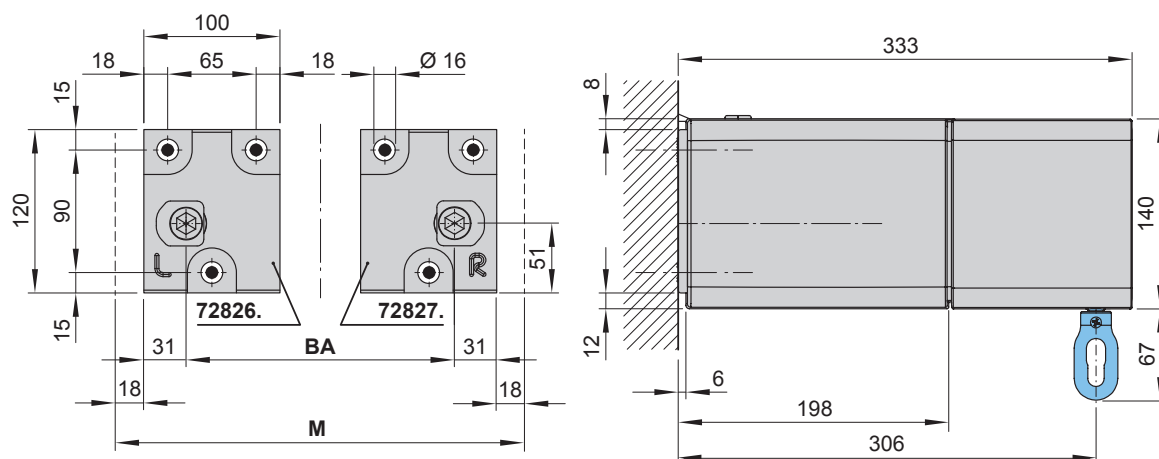
With eaves fixture bracket 270 mm (71659.)



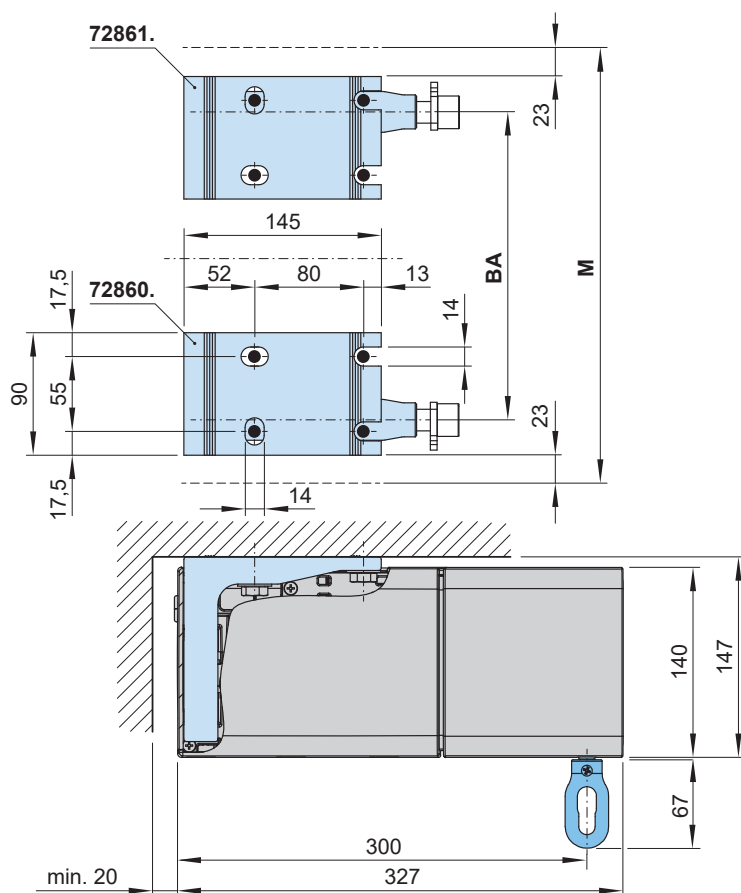
dimensions in mm

Awning with shadeplus

Face fixture (with manual shadeplus / drop valance)



Top fixture (with manual shadeplus / drop valance)



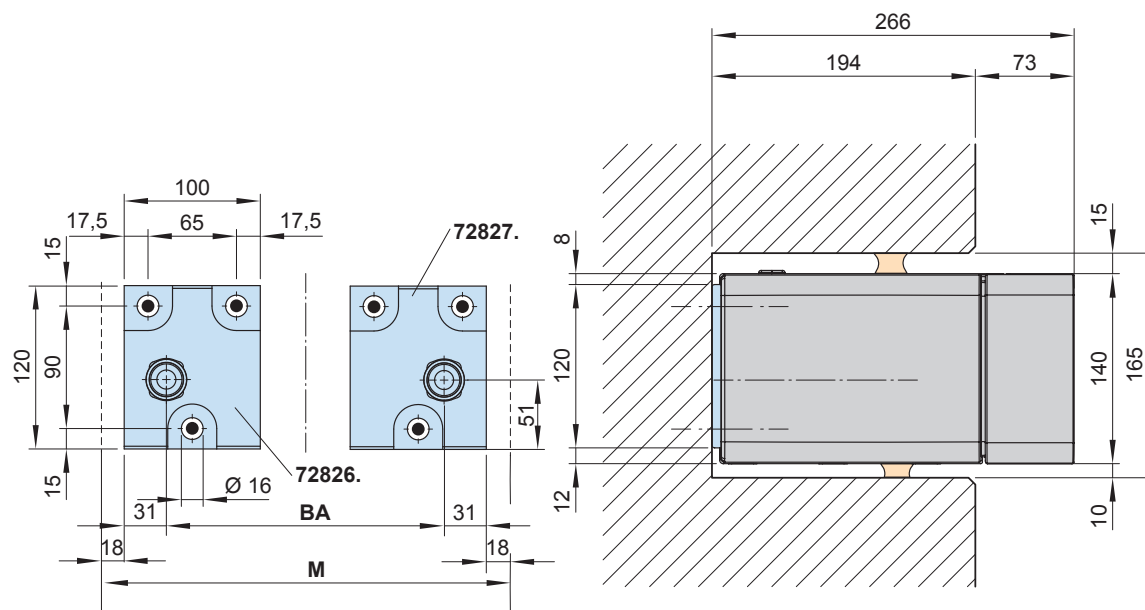
N.B! A shadeplus is not suitable for installation in niches or reveals if top or eaves fixture is used.

- 72826. = face fixture bracket, left
- 72827. = face fixture bracket, right
- 72860. = left top fixture brackets
- 72861. = top fixture bracket, right
- BA = width between fixture points
- M = **order width** = awning width

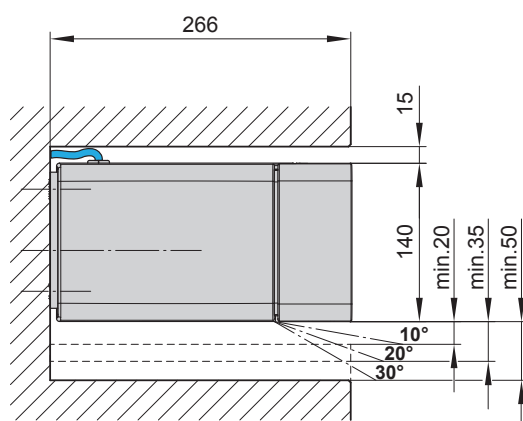
dimensions in mm

Reveal fixture

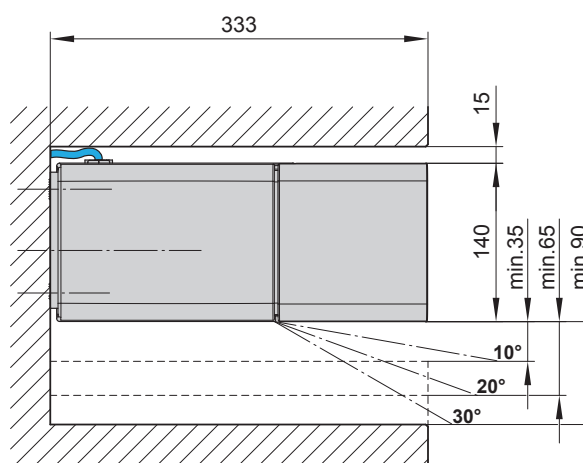
Motor drive



Installation flush with the fascia, without shadeplus



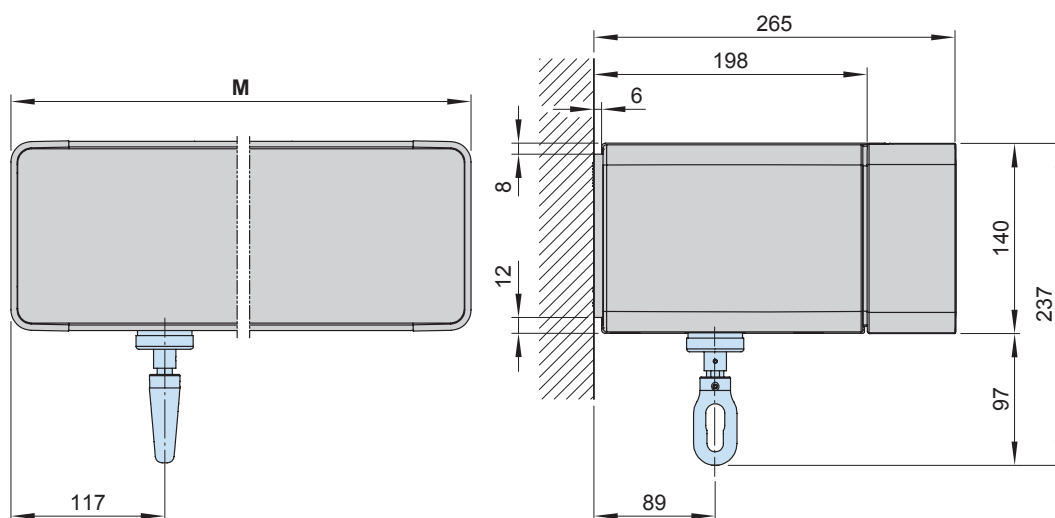
Installation flush with the fascia, with shadeplus



- 72826. = face fixture bracket, left
- 72827. = face fixture bracket, right
- BA = width between fixture points
- M = **order width** = awning width

dimensions in mm

Face fixture, manual operation ¹⁾

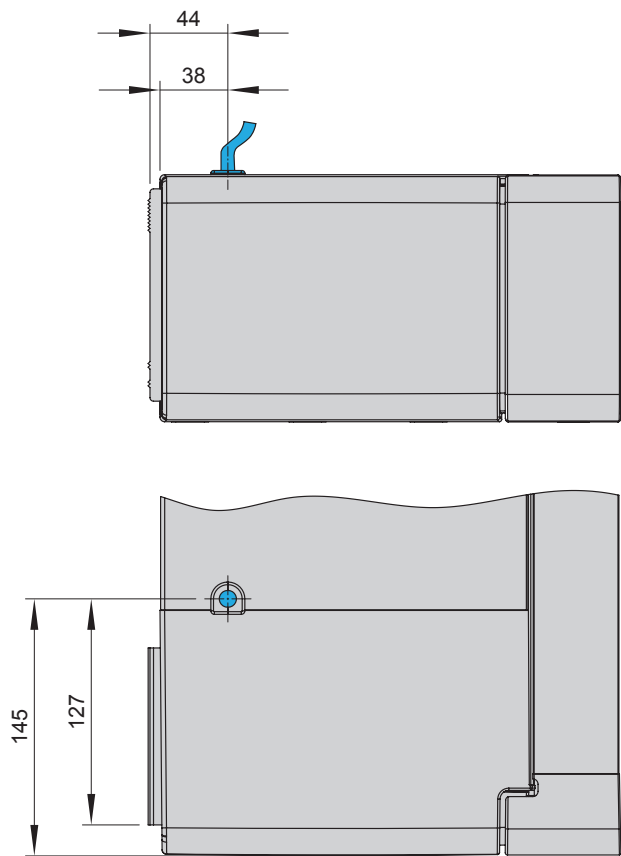


¹⁾ depending on the operation side, left or right
M = **order width** = awning width

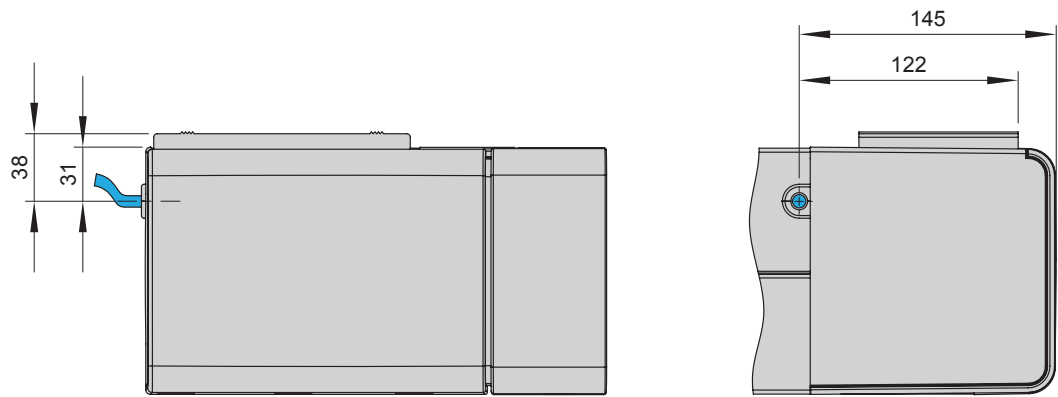
dimensions in mm

Motor cable exit point ¹⁾

Face fixture



Top fixture



Specification	Number of wire cores	max.
Awning with integrated radio-controlled technology		2
awning motor and / or shadeplus motor	1	
lighting	1	
Awning without radio-controlled technology		3
awning motor	1	
shadeplus motor	1	
lighting	1	

1) depending on the operation side, left or right

dimensions in mm

- 01
- 02
- 03
- 04**
- 05
- 06
- 07
- 08