



Side screen

markilux 790

Ideal, lateral protection against low-lying sun,
light wind and inquisitive glances.

Product Characteristics



face fixture bracket for the front profile with angle for lateral fixture ¹⁾



docking post with welded base plate



docking post incl. ground sleeve



safety mechanism for the handle fitted to the docking post



mobilfix: docking post fitted to a granite baseplate ¹⁾



docking bracket for front profile fitted to a railing



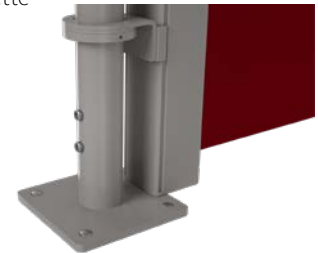
docking bracket for front profile fitted to a free-standing post or markilux pergola / pergola compact



detail at the top: pivoting option to fit the cassette to a free-standing post ¹⁾



detail at the bottom: free-standing post with swivelling holders for the cassette ¹⁾



¹⁾ Optional accessories

Product Characteristics

Description

- the discretely shaped side screen giving allround protection to the cover thanks to the satisfactory, square cassette.

Special features

- the height of the grip on the front profile can be adjusted to the exact conditions on site – so that the front profile can be locked in position and the cover tension adjusted without a problem
- the pre-set tension in the spring mechanism can be adjusted on site to comply with the wishes of the customer
- the screen cover can be cut diagonally to order, in which case the front profile will be correspondingly shorter – giving perfect protection in combination with a markilux folding-arm awning or markilux pergola classic / cubic / compact (only for version with rigid columns)
- intermediate screen heights and a good choice of fixture options are available – to make them employable on a patio, a balcony or even free standing
- docking post for the front profile with integrated safety lock for the grip to prevent it being released inadvertently

Dimensions

- awning in the standard version 173 cm / 213 cm / 250 cm in height
- extension: 200–450 cm (depending on the screen height and fabric pattern)
- intermediate sizes are available

Roller tube and lateral bearings

- round roller tube Ø 63 mm with keyway, galvanised steel, with integrated, maintenance-free spring mechanism providing optimum cover tension
- the roller tube bearing is made of machine finished, rolled aluminium

Awning profiles

- extruded aluminium, in façade quality, powder coated
- cassette profile in one piece, 95 mm × 95 mm
- circular front profile Ø 32 mm

End caps

- end caps are made of high-quality plastic, dyed through or powder coated – at the spring end they are aluminium, powder coated
- the front profile end caps are made of high-quality plastic, dyed through in grey (similar toRAL 7030)

Fixture brackets

- cassette brackets for face or reveal fixture, fixture to a rigid post (free standing or to the post of the markilux pergola classic / cubic / compact / markilux syncra)
- brackets for the front profile: face fixture, docking post with ground sleeve / base plate for bolting down, mobilfix (mobile docking post on a base plate), brackets for fixture to a (balcony) railing
- grip for front profile made of high-quality plastic, dyed through in grey (similar toRAL 7030)
- adapter sets for fixture to Krinner screw-in foundations

Frame colours

markilux frame colours without surcharge

traffic white, RAL 9016



metallic aluminium, RAL 9006



grey brown, similar to RAL 8019



off-white textured finish, 5233 ¹⁾



stone grey metallic, 5215 ¹⁾



anthracite metallic, 5204 ¹⁾



havana brown textured finish, 5229 ¹⁾



Non-standard powder-coated finish

Bespoke frame colours incur a surcharge – matt, metallic, finely textured and pearl finishes as well as other colour ranges (DB, Tiger etc.) on request. All frame colours are available at a surcharge with enhanced corrosion protection.

Colours may differ slightly from those depicted in both hue and finish.

¹⁾ textured finish

Dimensions and configuration options

Single unit

		Extension				
		250	300	350	400	450 ¹⁾
Order dimensions		200	251	301	351	401
		250	300	350	400	450
GH	173 ²⁾					
	213					—
	250					—

dimensions in cm

1) = angled top edge not possible

2) = minimum height 90 cm

GH = overall height (cassette height + 30 mm)
intermediate sizes are available at surcharge

	= cover height approx. 162 cm
	= cover height approx. 202 cm
	= cover height approx. 239 cm

Operation

	standard	optional
manual extension	✓	—
cover exit to the right	✓	—
cover exit to the left	—	✓

Awning cover

	fabric pattern no.	standard	optional	extension	tailored cloth
sunvas	300..–315..	✓	—		SN
sunsilk	324.. / 328.. / 369..	✓	—		SN
sunbow	411..–427..	✓	—	≤ 300	SN
vuscreen Alu ¹⁾	317..	—	✓	≤ 240 > 241 ≤ 300	N SN
transolair	338..	—	✓	≤ 240 > 241	N SN
transolair (120 cm)	339..	—	✓		SN

dimensions in cm

N = Seamless

SN = vertical seam, panel width 120 cm

1) Only possible up to a total height of 213 cm

Fixture options

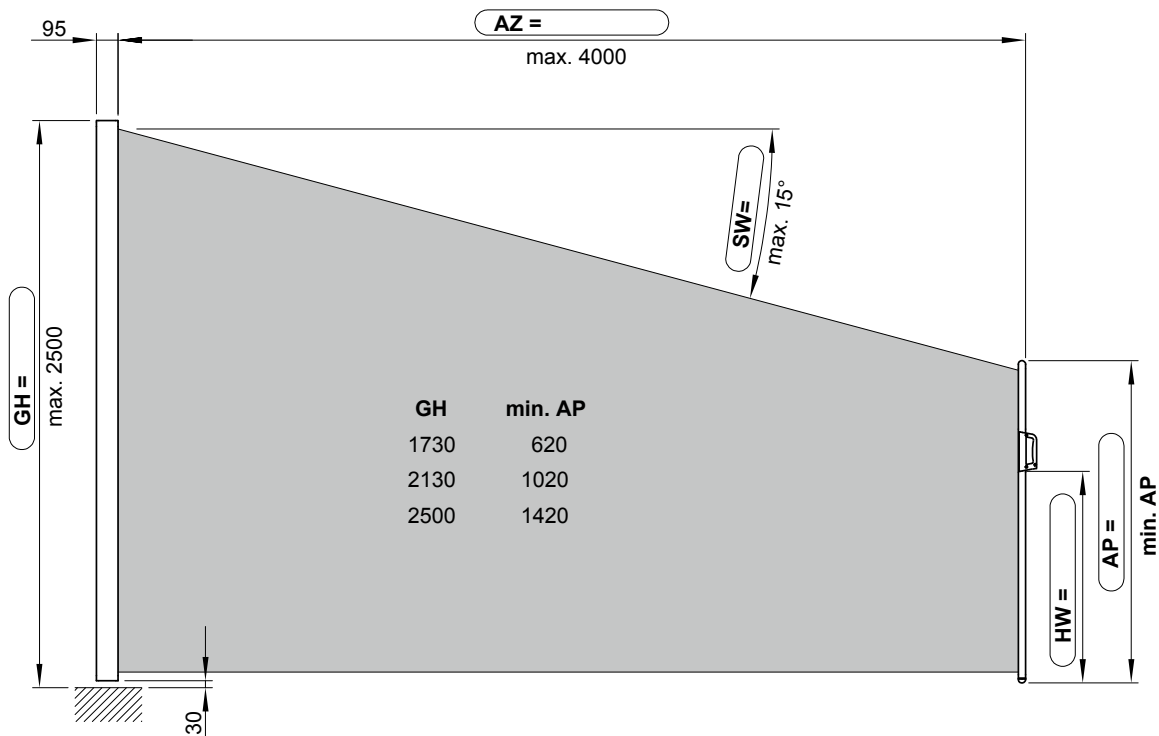
wall bracket 50 mm	78758.
wall docking option	77822.
docking bracket for front profile with clamp for fixture to a railing Ø 40-45 mm	77984.
docking bracket for front profile with clamp for fixture to a railing Ø 45-50 mm	77985.
docking post with welded footplate 950 mm	77820.
docking post with ground sleeve 950 mm	77821.

Fixture options

cassette bracket for reveal fixture 50 mm	77845.
angled bracket for lateral face fixture 175 × 60 × 60 mm	77987.
free-standing post 1730–1830 mm Ø 70 mm with footplate for cassette fixture	71175.
brackets for fixture of the cassette to the markilux pergola classic / cubic / compact	71174.
bracket for fixture of the front profile to a post Ø 70 mm	71136.
brackets for fixture of the cassette to a square post of the markilux syncra	72231.
brackets for fixture of the cassette to a round post of the markilux syncra	72208.
mobilfix granite including docking post	778211
adapter set for post fixture to a Krinner screw-in foundation ¹⁾	
adapter set for front profile fixture to a Krinner screwin foundation ¹⁾	

Dimension overview, cover with diagonally cut top edge

Please give the dimensions indicated when ordering



- 1)
- AP

AZ

GH

HW

SW
- =

=

=

=

=
- for a detailed description see the separate markilux sales documentation “Krinner – the screw-in foundation”

height of the front profile

order measurement = extension

order measurement = overall height side screen

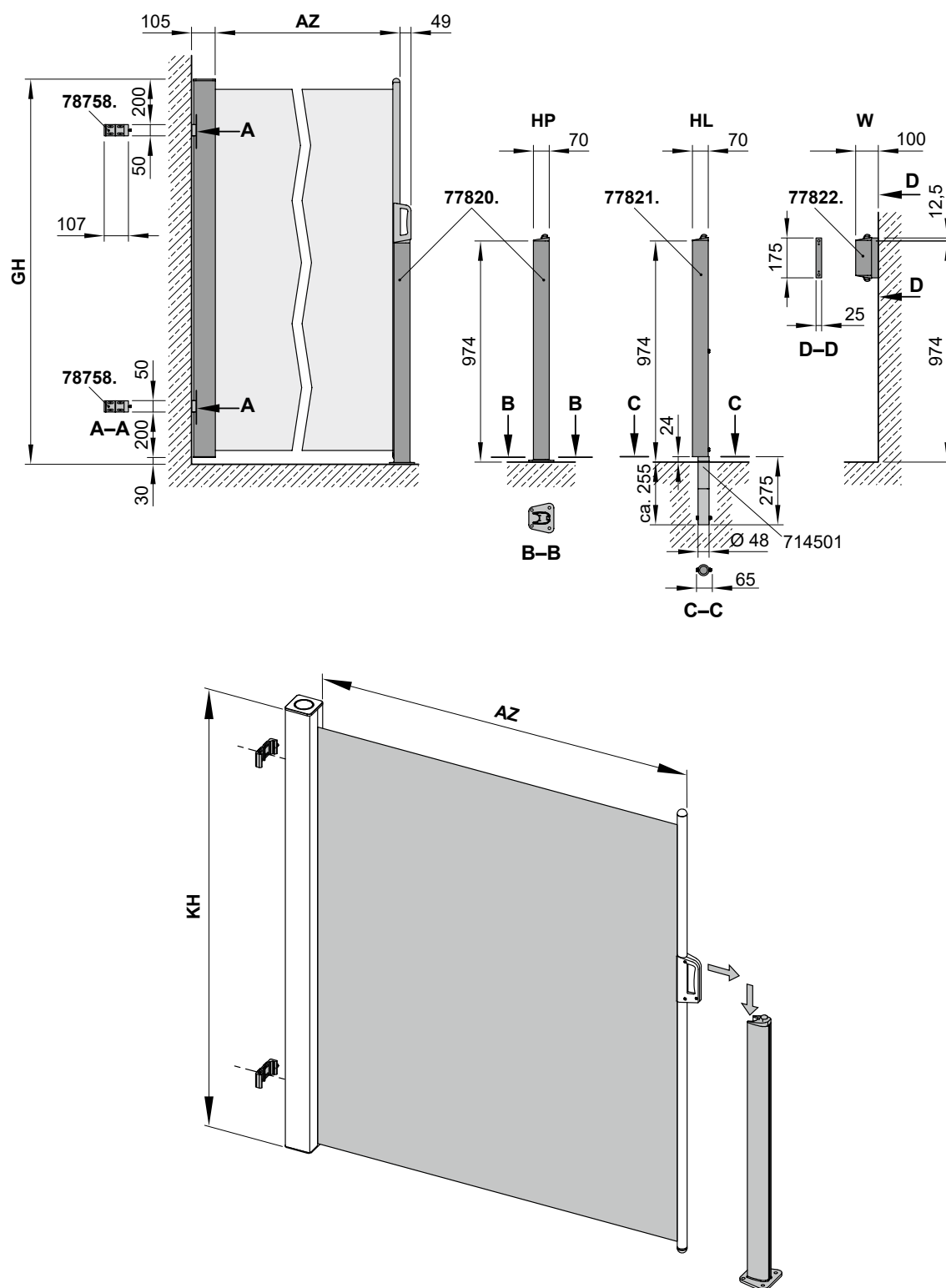
height of the wall docking bracket

angle of the top edge of the cover

dimensions in mm

Dimension overview, standard cover

Docking post with welded bottom plate, ground sleeve or face fixture bracket



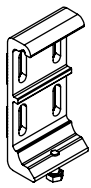
- 714501** = ground sleeve
77820. = sleeve assembly for insertion in the ground
77821. = docking post for tension profile for ground sleeve
77822. = face fixture bracket for tension profile
78758. = face fixture bracket 50 mm

- AZ** = **order measurement** = extension
GH = **order measurement** = overall height side screen
HL = sleeve assembly for insertion in the ground
HP = docking post for fixture to solid surface
KH = cassette height = GH - 30 mm
W = face fixture

dimensions in mm

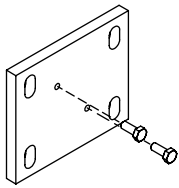
Face fixture, face fixture bracket for the cassette

Fixtures, fittings and accessories



face fixture bracket
50 mm

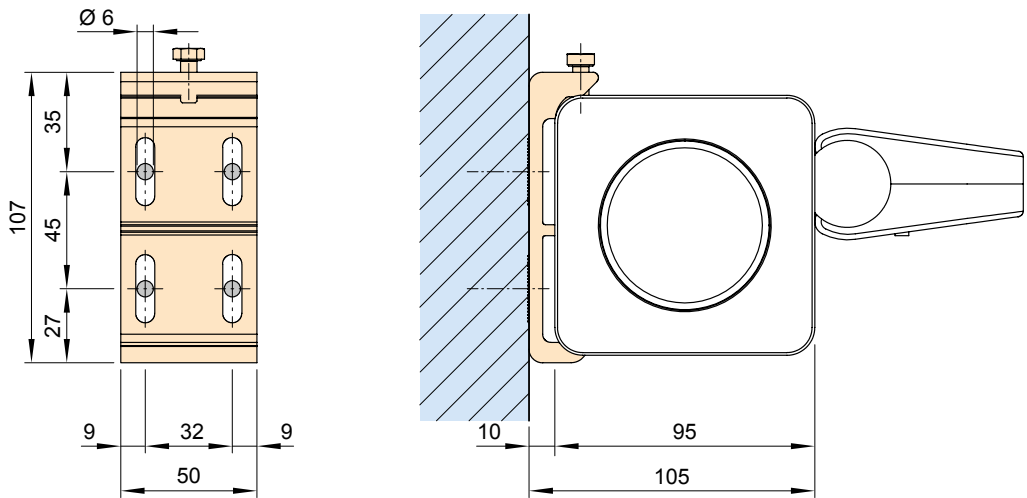
78758.



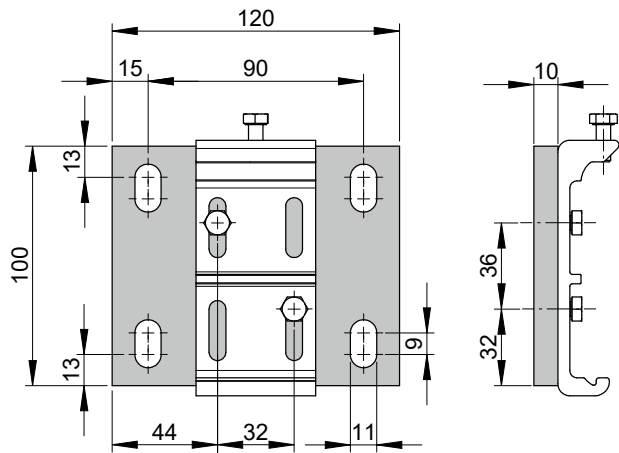
spreader plate
120 × 100 × 10 mm

78982.

Cover exit to the right standard (see figure) – cover exit to the left optional



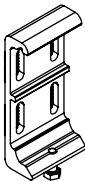
Spreader plate for the face fixture bracket



dimensions in mm

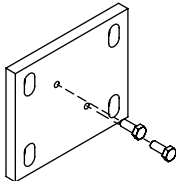
Face fixture, face fixture bracket for the cassette

Fixtures, fittings and accessories



face fixture bracket
50 mm

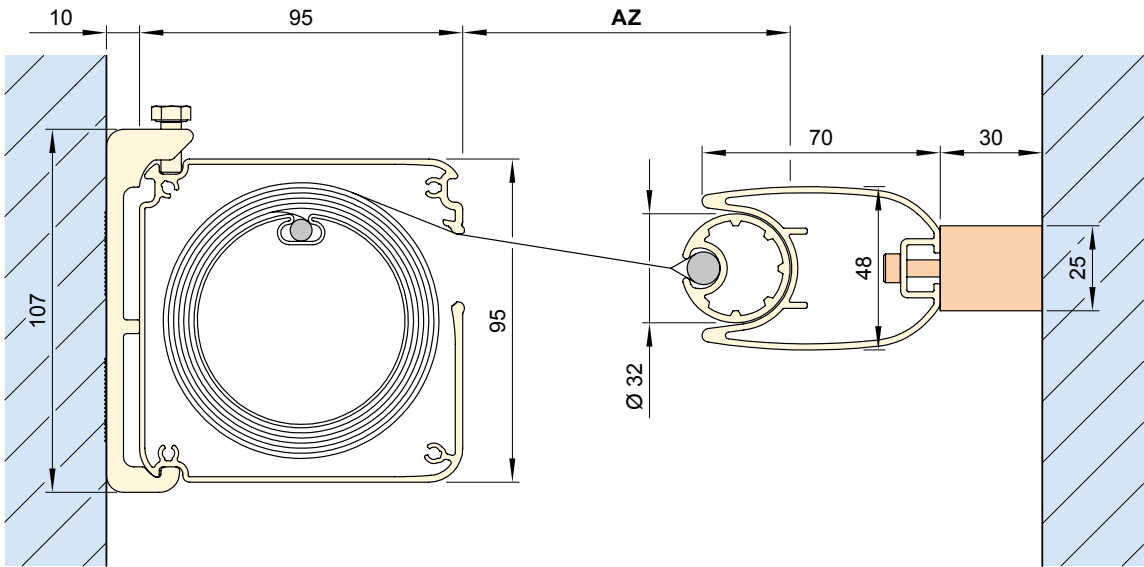
78758.



spreader plate
120 × 100 × 10 mm

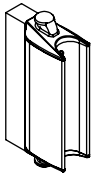
78982.

Cross section view with face fixture bracket for the front profile



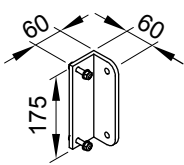
Face fixture, face fixture bracket for the front profile

Fixtures, fittings and accessories



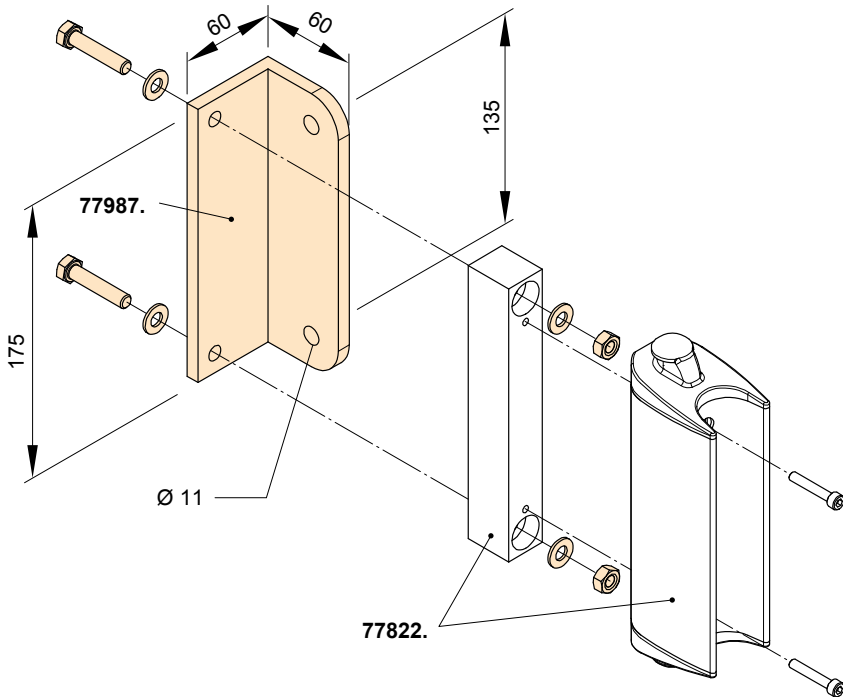
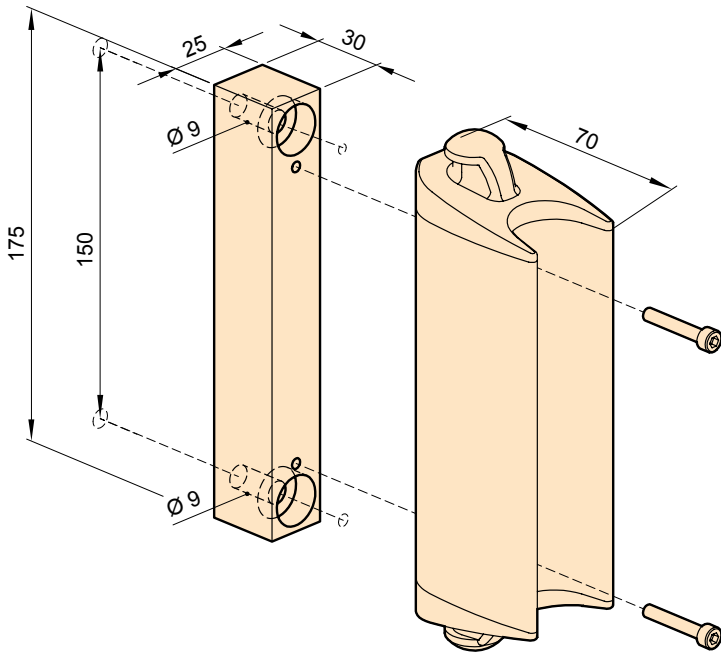
face fixture bracket assembly for the front profile

77822.



angled bracket for lateral face fixture 77822.
175 × 60 × 60 mm



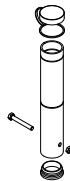
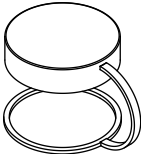
77987.



dimensions in mm

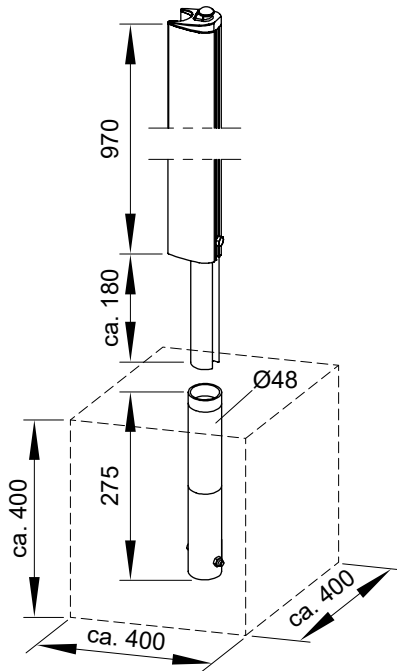
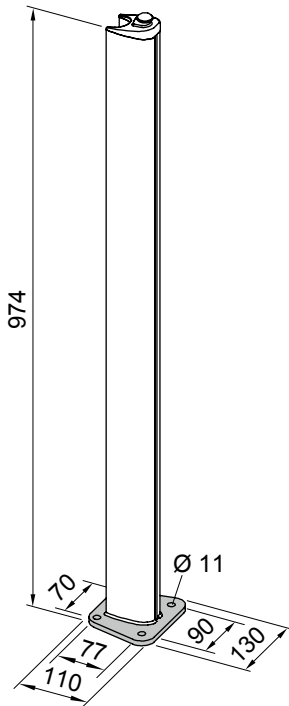
Docking post for front profile

Fixtures, fittings and accessories

 <p>docking post assembly for the front profile</p> <p>with welded base plate</p> <p>77820.</p>	 <p>docking post assembly for the front profile</p> <p>for the ground sleeve</p> <p>77821.</p>	 <p>ground sleeve</p> <p>714501</p>
 <p>covering cap for the ground sleeve</p> <p>702851</p>		

Docking post with welded footplate (77820.)

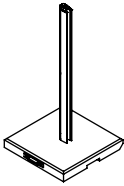
With connecting profile and ground sleeve (77821.)



dimensions in mm

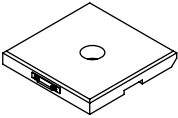
01 mobilfix

02 Fixtures, fittings and accessories



03 mobilfix
04 docking post mounted
05 on a granite base
06 plate ¹⁾
07 approx. 40 kg

77821. | 778941 | 778931



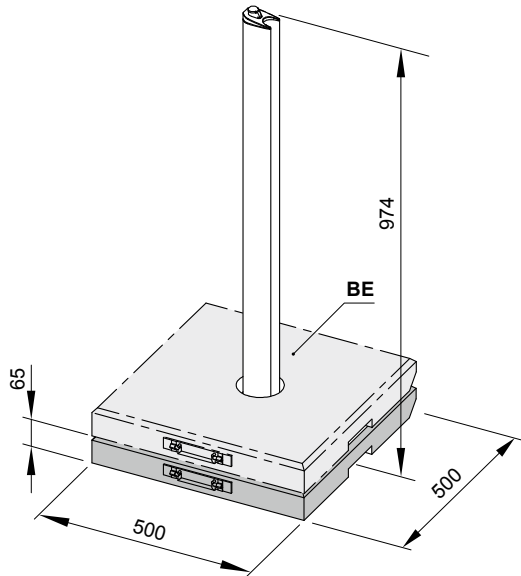
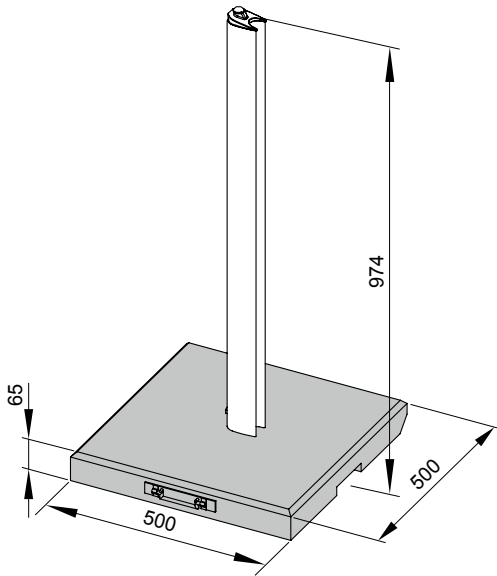
08 Additional granite slab
09 for the mobilfix
10 (recommended in light
11 wind) approx. 39 kg
12 with transport function

779311

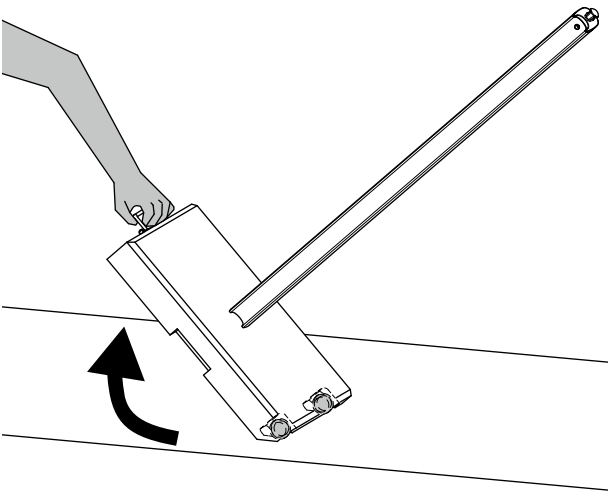
06 1) Granite is a natural stone and can vary in colour and structure.
07 **Note:** The markilux mobilfix is only to be used up to a maximum screen height of **(GH)** 213 cm.

08 mobilfix

09 mobilfix with additional granite slab to weigh it down



Transport function mobilfix

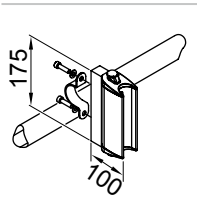


BE = additional granite slab to weigh it down (optional)

dimensions in mm

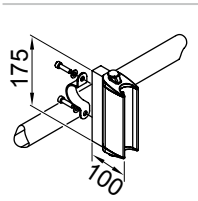
Docking bracket for front profile with clamp for fixture to a railing

Fixtures, fittings and accessories



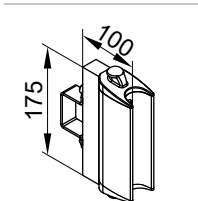
docking bracket for front profile with clamp for fixture to a railing
Ø 40-45 mm

77984.



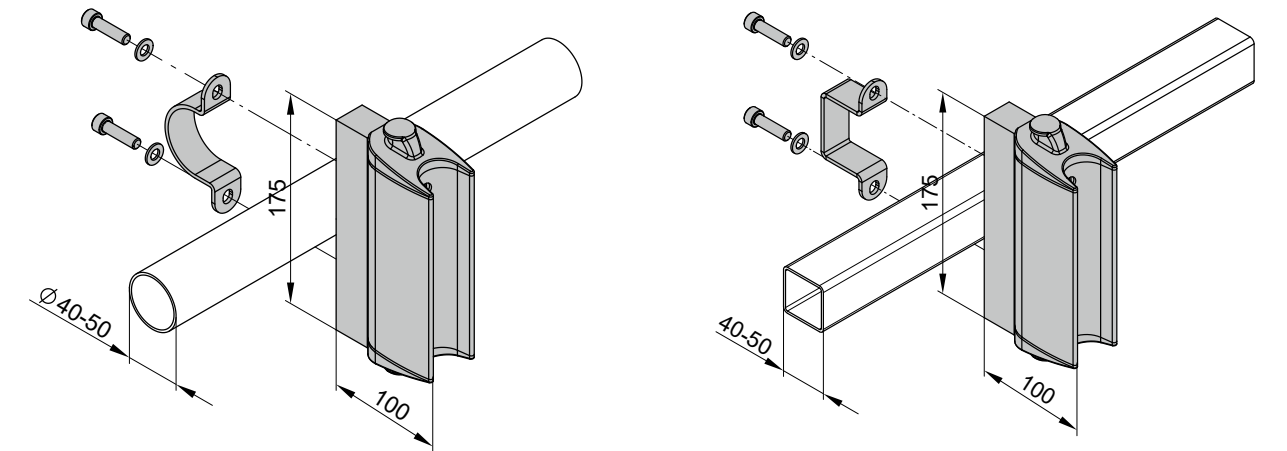
docking bracket for front profile with clamp for fixture to a railing
Ø 45-50 mm

77985.



Railing bracket square post
Ø 40-50 mm

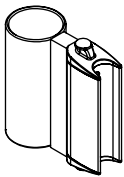
62433.



dimensions in mm

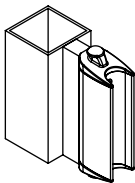
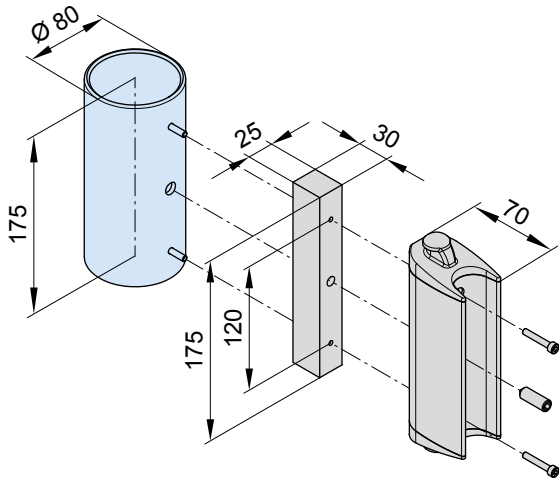
Railing bracket assembly for front profile

Fixtures, fittings and accessories



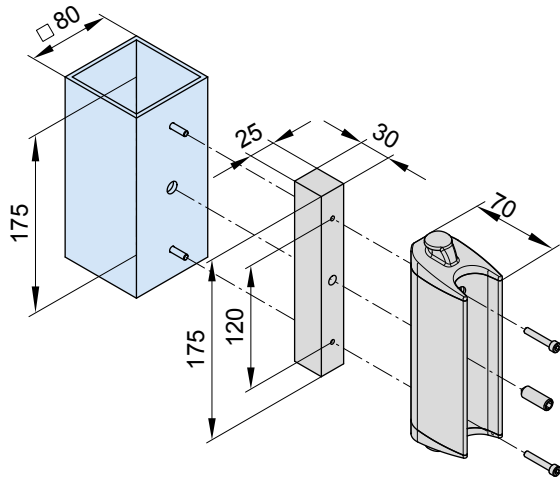
docking bracket for front profile
for markilux pergola
classic / cubic / compact
round posts

71136.



docking bracket for front profile
for markilux pergola /
pergola compact
square posts


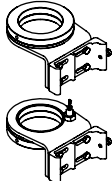
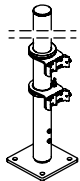
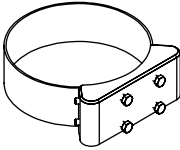
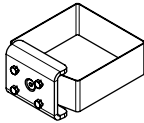
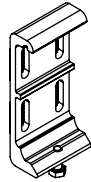
75279.

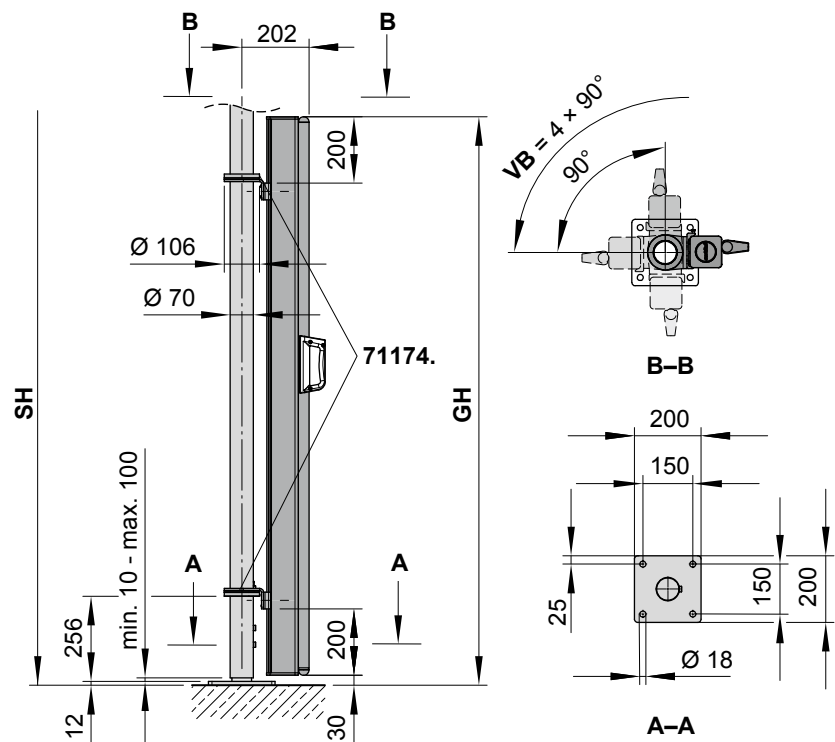


dimensions in mm

Cassette fixture to a post

Fixtures, fittings and accessories

 <p>71172.</p>	<p>post with base plate</p> <p>overall height adjustable from approx 1730–1830 mm, Ø 70 mm</p>	 <p>71174.</p>	<p>universal fixture bracket: for the post of the markilux pergola classic / cubic / compact, 2 pieces</p> <p>height approx. 80 mm, Ø 70 mm</p>	 <p>71175.</p>	<p>post 71172. including base plate 71174. fixture assembly for universal bracket for cassette overall height adjustable from approx 1730–1830 mm, Ø 70 mm</p>
 <p>72208.</p>	<p>post fixture for universal fixture bracket 78758. to the post of markilux syncra</p> <p>width 52 mm, for universal fixture bracket Ø 140 mm, for round post</p>	 <p>72231.</p>	<p>post fixture for universal fixture bracket 78758. to the post of markilux syncra</p> <p>width 52 mm, for square post 125 × 125 mm</p>	 <p>78758.</p>	<p>face fixture bracket 50 mm</p>

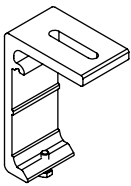


- GH = order dimension = overall height
- SH = support post height
- VB = adjustment range (VB) of the fixture brackets with locking lever (4 × 90°)

dimensions in mm

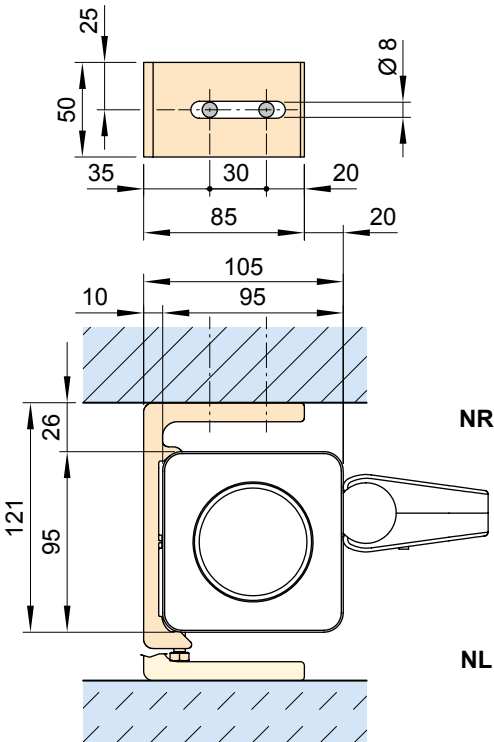
Reveal fixture of the cassette

Fixtures, fittings and accessories



cassette bracket for
reveal fixture
50 mm

77845.



NR = reveal fixture right
NL = reveal fixture left

dimensions in mm