



Minimalism in mind.
Simply big in shade.





markilux shadeplus

This vertical solar shading is perfectly integrated into the front profile and can be retracted and extended manually or via solar power by remote control or app as required.



Awning cover beautifully protected

The slim-line full cassette with a minimalistic design, 205 x 160 mm, offers maximum protection for the awning cover.

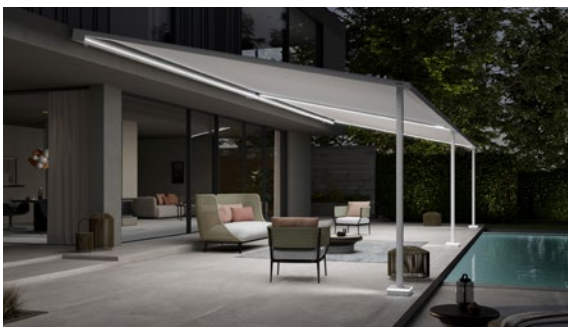
Pergola awning

maximum 600 x 500 cm

maximum 500 x 600 cm

Options

coloured lighting,
LED Line in guide tracks,
LED Line in cassette,
LED Line in posts,
LED Line/LED Uplights
in footplate covers,
shadeplus,
lateral wind and privacy
protection,
telescopic posts,
ballast boxes,
coupled unit

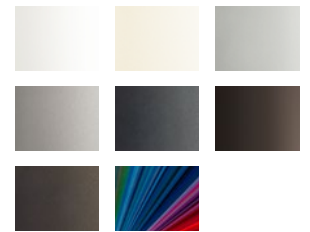


Smart LED lighting options

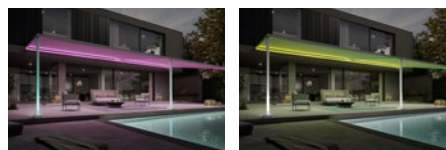
Configure the LED Line in the cassette and in the guide tracks, in the posts and their footplate covers as well as LED Uplights in the footplate covers individually and simply control them via the app. Lighting options in the support post area are only available with rigid post design.



Awning colours



Awning cover fabrics



Magical worlds full of atmosphere

Outdoor living in a new light. And colour.

Explore your options now at markilux.com